

AP1B1 antibody - C-terminal region

Rabbit Polyclonal Antibody

Catalog # AI14482

Product Information

Application	WB
Primary Accession	Q10567
Other Accession	NM_001127 , NP_001118
Reactivity	Human, Mouse, Rat, Rabbit, Zebrafish, Pig, Dog, Guinea Pig, Horse, Bovine
Predicted	Human, Mouse, Rat, Rabbit, Zebrafish, Pig, Chicken, Dog, Horse, Bovine
Host	Rabbit
Clonality	Polyclonal
Calculated MW	104607

Additional Information

Gene ID	162
Alias Symbol	ADTB1, AP105A, BAM22, CLAPB2
Other Names	AP-1 complex subunit beta-1, Adaptor protein complex AP-1 subunit beta-1, Adaptor-related protein complex 1 subunit beta-1, Beta-1-adaptin, Beta-adaptin 1, Clathrin assembly protein complex 1 beta large chain, Golgi adaptor HA1/AP1 adaptin beta subunit, AP1B1, ADTB1, BAM22, CLAPB2
Format	Liquid. Purified antibody supplied in 1x PBS buffer with 0.09% (w/v) sodium azide and 2% sucrose.
Reconstitution & Storage	Add 50 ul of distilled water. Final anti-AP1B1 antibody concentration is 1 mg/ml in PBS buffer with 2% sucrose. For longer periods of storage, store at 20°C. Avoid repeat freeze-thaw cycles.
Precautions	AP1B1 antibody - C-terminal region is for research use only and not for use in diagnostic or therapeutic procedures.

Protein Information

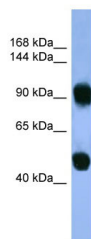
Name	AP1B1
Synonyms	ADTB1, BAM22, CLAPB2
Function	Subunit of clathrin-associated adaptor protein complex 1 that plays a role in protein sorting in the late-Golgi/trans-Golgi network (TGN) and/or endosomes (PubMed: 31630791). The AP complexes mediate both the recruitment of clathrin to membranes and the recognition of sorting signals within the cytosolic tails of transmembrane cargo molecules.

Cellular Location	Golgi apparatus. Cytoplasmic vesicle, clathrin- coated vesicle membrane; Peripheral membrane protein; Cytoplasmic side Note=Component of the coat surrounding the cytoplasmic face of coated vesicles located at the Golgi complex
Tissue Location	Widely expressed.

References

Peyrard M.,et al.Hum. Mol. Genet. 3:1393-1399(1994).
 Collins J.E.,et al.Genome Biol. 5:R84.1-R84.11(2004).
 Dunham I.,et al.Nature 402:489-495(1999).
 Peyrard M.,et al.Genomics 36:112-117(1996).
 Choudhary C.,et al.Science 325:834-840(2009).

Images



WB Suggested Anti-AP1B1 Antibody Titration: 0.2-1 µg/ml
 ELISA Titer: 1:62500
 Positive Control: Human Muscle

Please note: All products are 'FOR RESEARCH USE ONLY. NOT FOR USE IN DIAGNOSTIC OR THERAPEUTIC PROCEDURES'.