

# COL4A3 antibody - N-terminal region

Rabbit Polyclonal Antibody

Catalog # AI14487

## Product Information

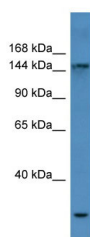
<b>Application</b>	WB
<b>Primary Accession</b>	<a href="#">E7ENN2</a>
<b>Other Accession</b>	<a href="#">NM_031362</a> , <a href="#">NP_112730</a>
<b>Reactivity</b>	Human, Mouse, Rabbit, Guinea Pig, Horse
<b>Predicted</b>	Human, Horse
<b>Host</b>	Rabbit
<b>Clonality</b>	Polyclonal
<b>Calculated MW</b>	156 KDa

## Additional Information

<b>Format</b>	Liquid. Purified antibody supplied in 1x PBS buffer with 0.09% (w/v) sodium azide and 2% sucrose.
<b>Reconstitution &amp; Storage</b>	Add 50 ul of distilled water. Final anti-COL4A3 antibody concentration is 1 mg/ml in PBS buffer with 2% sucrose. For longer periods of storage, store at 20°C. Avoid repeat freeze-thaw cycles.
<b>Precautions</b>	COL4A3 antibody - N-terminal region is for research use only and not for use in diagnostic or therapeutic procedures.

## Protein Information

## Images



WB Suggested Anti-COL4A3 Antibody Titration: 0.2-1  
µg/ml  
ELISA Titer: 1:62500  
Positive Control: Human Liver

Please note: All products are 'FOR RESEARCH USE ONLY. NOT FOR USE IN DIAGNOSTIC OR THERAPEUTIC PROCEDURES'.