

C3AR1 Antibody - C-terminal region

Rabbit Polyclonal Antibody

Catalog # AI14495

Product Information

Application	WB
Primary Accession	Q16581
Other Accession	NP_004045
Reactivity	Human
Host	Rabbit
Clonality	Polyclonal
Calculated MW	53864

Additional Information

Gene ID	719
Alias Symbol Other Names	Name=C3AR1, C3a anaphylatoxin chemotactic receptor, C3AR, C3a-R, C3AR1, AZ3B, C3R1, HNFAG09
Format	Liquid. Purified antibody supplied in 1x PBS buffer with 0.09% (w/v) sodium azide and 2% sucrose.
Reconstitution & Storage	Add 50 μ l of distilled water. Final Anti-C3AR1 antibody concentration is 1 mg/ml in PBS buffer with 2% sucrose. For longer periods of storage, store at -20°C. Avoid repeat freeze-thaw cycles.
Precautions	C3AR1 Antibody - C-terminal region is for research use only and not for use in diagnostic or therapeutic procedures.

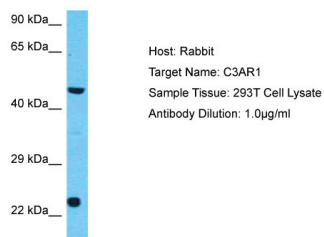
Protein Information

Name	C3AR1
Synonyms	AZ3B, C3R1, HNFAG09
Function	Receptor for the chemotactic and inflammatory peptide anaphylatoxin C3a. This receptor stimulates chemotaxis, granule enzyme release and superoxide anion production.
Cellular Location	Cell membrane; Multi-pass membrane protein.
Tissue Location	Widely expressed in several differentiated hematopoietic cell lines, in the lung, spleen, ovary, placenta, small intestine, throughout the brain, heart, and endothelial cells. Mostly expressed in lymphoid tissues

References

Roglic A.,et al.Biochim. Biophys. Acta 1305:39-43(1996).
Crass T.,et al.Eur. J. Immunol. 26:1944-1950(1996).
Bautsch W.,et al.Submitted (JAN-1998) to the EMBL/GenBank/DDBJ databases.
Ames R.S.,et al.J. Biol. Chem. 271:20231-20234(1996).
Suwa M.,et al.Submitted (JUL-2001) to the EMBL/GenBank/DDBJ databases.

Images



Host: Rabbit
Target Name: C3AR1
Sample Tissue: 293T Whole cell lysate
S
Antibody Dilution: 1.0 µg/ml

Please note: All products are 'FOR RESEARCH USE ONLY. NOT FOR USE IN DIAGNOSTIC OR THERAPEUTIC PROCEDURES'.