

CTSC Antibody - N-terminal region

Rabbit Polyclonal Antibody

Catalog # AI14499

Product Information

Application	WB
Primary Accession	P53634
Reactivity	Human, Rat, Rabbit, Pig
Predicted	Human, Rabbit, Pig
Host	Rabbit
Clonality	Polyclonal
Calculated MW	51854

Additional Information

Gene ID	1075
Other Names	Dipeptidyl peptidase 1, 3.4.14.1, Cathepsin C, Cathepsin J, Dipeptidyl peptidase I, DPP-I, DPPI, Dipeptidyl transferase, Dipeptidyl peptidase 1 exclusion domain chain, Dipeptidyl peptidase I exclusion domain chain, Dipeptidyl peptidase 1 heavy chain, Dipeptidyl peptidase I heavy chain, Dipeptidyl peptidase 1 light chain, Dipeptidyl peptidase I light chain, CTSC, CPPI
Format	Liquid. Purified antibody supplied in 1x PBS buffer with 0.09% (w/v) sodium azide and 2% sucrose.
Reconstitution & Storage	Add 50 ul of distilled water. Final anti-CTSC antibody concentration is 1 mg/ml in PBS buffer with 2% sucrose. For longer periods of storage, store at 20°C. Avoid repeat freeze-thaw cycles.
Precautions	CTSC Antibody - N-terminal region is for research use only and not for use in diagnostic or therapeutic procedures.

Protein Information

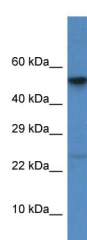
Name	CTSC
Synonyms	CPPI
Function	Thiol protease (PubMed: 1586157). Has dipeptidylpeptidase activity (PubMed: 1586157). Active against a broad range of dipeptide substrates composed of both polar and hydrophobic amino acids (PubMed: 1586157). Proline cannot occupy the P1 position and arginine cannot occupy the P2 position of the substrate (PubMed: 1586157). Can act as both an exopeptidase and endopeptidase (PubMed: 1586157). Activates serine proteases such as elastase, cathepsin G and granzymes A and B (PubMed: 8428921).

Cellular Location	Lysosome.
Tissue Location	Ubiquitous. Highly expressed in lung, kidney and placenta. Detected at intermediate levels in colon, small intestine, spleen and pancreas.

References

Paris A.,et al.FEBS Lett. 369:326-330(1995).
Rao N.V.,et al.J. Biol. Chem. 272:10260-10265(1997).
Allende L.M.,et al.Hum. Mutat. 17:152-153(2001).
Allende L.M.,et al.Mol. Genet. Metab. 79:146-148(2003).
Ota T.,et al.Nat. Genet. 36:40-45(2004).

Images



Host: Rabbit
Target Name: CTSC
Sample Tissue: HCT15 Whole cell lysate
S
Antibody Dilution: 1.0µg/ml

Please note: All products are 'FOR RESEARCH USE ONLY. NOT FOR USE IN DIAGNOSTIC OR THERAPEUTIC PROCEDURES'.