

# ARPM1 antibody - N-terminal region

Rabbit Polyclonal Antibody

Catalog # AI14502

## Product Information

---

<b>Application</b>	WB
<b>Primary Accession</b>	<a href="#">Q9BYD9</a>
<b>Other Accession</b>	<a href="#">NM_032487</a> , <a href="#">NP_115876</a>
<b>Reactivity</b>	Human, Rabbit, Horse
<b>Predicted</b>	Human
<b>Host</b>	Rabbit
<b>Clonality</b>	Polyclonal
<b>Calculated MW</b>	41008

## Additional Information

---

<b>Gene ID</b>	84517
<b>Alias Symbol</b>	MGC15664, ARPM1
<b>Other Names</b>	Actin-related protein T3, ARP-T3, Actin-related protein M1, ACTRT3, ARPM1
<b>Format</b>	Liquid. Purified antibody supplied in 1x PBS buffer with 0.09% (w/v) sodium azide and 2% sucrose.
<b>Reconstitution &amp; Storage</b>	Add 50 ul of distilled water. Final anti-ARPM1 antibody concentration is 1 mg/ml in PBS buffer with 2% sucrose. For longer periods of storage, store at 20°C. Avoid repeat freeze-thaw cycles.
<b>Precautions</b>	ARPM1 antibody - N-terminal region is for research use only and not for use in diagnostic or therapeutic procedures.

## Protein Information

---

<b>Name</b>	ACTRT3
<b>Synonyms</b>	ARPM1
<b>Cellular Location</b>	Cytoplasm, cytoskeleton. Cytoplasm. Nucleus
<b>Tissue Location</b>	Ubiquitously expressed.

## References

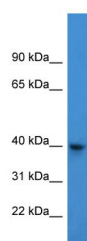
---

Harata M., et al. Biochim. Biophys. Acta 1522:130-133(2001).

Ota T.,et al.Nat. Genet. 36:40-45(2004).  
Muzny D.M.,et al.Nature 440:1194-1198(2006).

## Images

---



WB Suggested Anti-ARPM1 Antibody Titration: 0.2-1 µg/ml  
ELISA Titer: 1:1562500  
Positive Control: 293T cell lysate

Please note: All products are 'FOR RESEARCH USE ONLY. NOT FOR USE IN DIAGNOSTIC OR THERAPEUTIC PROCEDURES'.