

MYPN antibody - C-terminal region

Rabbit Polyclonal Antibody

Catalog # AI14511

Product Information

Application	WB
Primary Accession	Q86TC9
Other Accession	NM_032578 , NP_115967
Reactivity	Human, Mouse, Rat, Rabbit, Zebrafish, Pig, Dog, Guinea Pig, Horse, Bovine
Predicted	Human, Mouse, Rat, Chicken, Dog, Guinea Pig, Horse, Bovine
Host	Rabbit
Clonality	Polyclonal
Calculated MW	145257

Additional Information

Gene ID	84665
Alias Symbol	MYOP
Other Names	Myopalladin, 145 kDa sarcomeric protein, MYPN, MYOP
Format	Liquid. Purified antibody supplied in 1x PBS buffer with 0.09% (w/v) sodium azide and 2% sucrose.
Reconstitution & Storage	Add 50 ul of distilled water. Final anti-MYPN antibody concentration is 1 mg/ml in PBS buffer with 2% sucrose. For longer periods of storage, store at 20°C. Avoid repeat freeze-thaw cycles.
Precautions	MYPN antibody - C-terminal region is for research use only and not for use in diagnostic or therapeutic procedures.

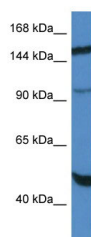
Protein Information

Name	MYPN
Synonyms	MYOP
Function	Component of the sarcomere that tethers together nebulin (skeletal muscle) and nebulin (cardiac muscle) to alpha-actinin, at the Z lines.
Cellular Location	Cytoplasm. Nucleus. Cytoplasm, myofibril, sarcomere. Cytoplasm, myofibril, sarcomere, Z line. Note=Bound to sarcomere both at the Z-line periphery and in the central I-band region.
Tissue Location	Expressed in adult skeletal muscle and fetal heart.

References

Bang M.-L.,et al.J. Cell Biol. 153:413-427(2001).
Ota T.,et al.Nat. Genet. 36:40-45(2004).
Bechtel S.,et al.BMC Genomics 8:399-399(2007).
Deloukas P.,et al.Nature 429:375-381(2004).
Ma K.,et al.FEBS Lett. 532:273-278(2002).

Images



WB Suggested Anti-MYPN Antibody Titration: 1.0 µg/ml
Positive Control: HepG2 Whole Cell

Please note: All products are 'FOR RESEARCH USE ONLY. NOT FOR USE IN DIAGNOSTIC OR THERAPEUTIC PROCEDURES'.