

SRRM4 antibody - middle region

Rabbit Polyclonal Antibody

Catalog # AI14514

Product Information

Application	WB
Primary Accession	A7MD48
Other Accession	NM_194286 , NP_919262
Reactivity	Human, Mouse, Rat, Rabbit, Dog, Guinea Pig, Horse, Bovine
Predicted	Human, Mouse, Rabbit, Dog, Guinea Pig, Horse, Bovine
Host	Rabbit
Clonality	Polyclonal
Calculated MW	68559

Additional Information

Gene ID	84530
Alias Symbol	KIAA1853, MGC176729, MU-MB-2.76, nSR100
Other Names	Serine/arginine repetitive matrix protein 4, Medulloblastoma antigen MU-MB-2.76, Neural-specific serine/arginine repetitive splicing factor of 100 kDa, Neural-specific SR-related protein of 100 kDa, nSR100, SRRM4, KIAA1853
Format	Liquid. Purified antibody supplied in 1x PBS buffer with 0.09% (w/v) sodium azide and 2% sucrose.
Reconstitution & Storage	Add 50 ul of distilled water. Final anti-SRRM4 antibody concentration is 1 mg/ml in PBS buffer with 2% sucrose. For longer periods of storage, store at 20°C. Avoid repeat freeze-thaw cycles.
Precautions	SRRM4 antibody - middle region is for research use only and not for use in diagnostic or therapeutic procedures.

Protein Information

Name	SRRM4
Synonyms	KIAA1853
Function	Splicing factor specifically required for neural cell differentiation. Acts in conjunction with nPTB/PTBP2 by binding directly to its regulated target transcripts and promotes neural- specific exon inclusion in many genes that function in neural cell differentiation. Required to promote the inclusion of neural-specific exon 10 in nPTB/PTBP2, leading to increased expression of neural- specific nPTB/PTBP2. Also promotes the inclusion of exon 16 in DAAM1 in neuron extracts (By similarity). Promotes alternative splicing of

REST transcripts to produce REST isoform 3 (REST4) with greatly reduced repressive activity, thereby activating expression of REST targets in neural cells (PubMed:[30684677](#)). Plays an important role during embryonic development as well as in the proper functioning of the adult nervous system. Regulates alternative splicing events in genes with important neuronal functions (By similarity).

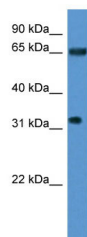
Cellular Location Nucleus {ECO:0000250|UniProtKB:Q8BKA3}.

Tissue Location Specifically expressed in neuronal cells (at protein level). Expressed in the cerebellum

References

Nagase T.,et al.DNA Res. 8:85-95(2001).
Ota T.,et al.Nat. Genet. 36:40-45(2004).
Behrends U.,et al.Int. J. Cancer 106:244-251(2003).
Calarco J.A.,et al.Cell 138:898-910(2009).

Images



WB Suggested Anti-SRRM4 Antibody Titration: 0.2-1 µg/ml
ELISA Titer: 1:1562500
Positive Control: Human Liver

Please note: All products are 'FOR RESEARCH USE ONLY. NOT FOR USE IN DIAGNOSTIC OR THERAPEUTIC PROCEDURES'.