

ELMOD3 antibody - C-terminal region

Rabbit Polyclonal Antibody

Catalog # AI14517

Product Information

| | |
|--------------------------|--|
| Application | WB |
| Primary Accession | Q96FG2 |
| Other Accession | NM_032213 , NP_115589 |
| Reactivity | Human, Mouse, Rat, Rabbit, Pig, Dog, Guinea Pig, Horse, Bovine |
| Predicted | Dog, Guinea Pig, Bovine |
| Host | Rabbit |
| Clonality | Polyclonal |
| Calculated MW | 43046 |

Additional Information

| | |
|-------------------------------------|---|
| Gene ID | 84173 |
| Alias Symbol | FLJ21977, FLJ35601, LST3, MGC111036, RBED1, RBM29 |
| Other Names | ELMO domain-containing protein 3, RNA-binding motif and ELMO domain-containing protein 1, RNA-binding motif protein 29, RNA-binding protein 29, ELMOD3, RBED1, RBM29 |
| Format | Liquid. Purified antibody supplied in 1x PBS buffer with 0.09% (w/v) sodium azide and 2% sucrose. |
| Reconstitution & Storage | Add 50 ul of distilled water. Final anti-ELMOD3 antibody concentration is 1 mg/ml in PBS buffer with 2% sucrose. For longer periods of storage, store at 20°C. Avoid repeat freeze-thaw cycles. |
| Precautions | ELMOD3 antibody - C-terminal region is for research use only and not for use in diagnostic or therapeutic procedures. |

Protein Information

| | |
|--------------------------|--|
| Name | ELMOD3 |
| Synonyms | RBED1, RBM29 |
| Function | Acts as a GTPase-activating protein (GAP) for ARL2 with low specific activity. |
| Cellular Location | Cell projection, stereocilium. Cell projection, kinocilium. Cytoplasm, cytoskeleton. Note=Also present in the cuticular plate of auditory hair cells. Expressed along the length of the stereocilia, but excluded from the very tip (By similarity). Colocalizes with F- actin cytoskeleton. |

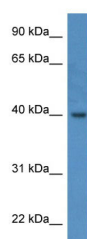
Tissue Location

Both isoform 1 and isoform 6 are widely expressed.

References

Wang P.,et al.Submitted (OCT-2005) to the EMBL/GenBank/DDBJ databases.
Ota T.,et al.Nat. Genet. 36:40-45(2004).
Wan D.,et al.Proc. Natl. Acad. Sci. U.S.A. 101:15724-15729(2004).
Hillier L.W.,et al.Nature 434:724-731(2005).
Mural R.J.,et al.Submitted (SEP-2005) to the EMBL/GenBank/DDBJ databases.

Images



WB Suggested Anti-ELMOD3 Antibody Titration: 0.2-1
 $\mu\text{g/ml}$
ELISA Titer: 1:312500
Positive Control: Human Lung

Please note: All products are 'FOR RESEARCH USE ONLY. NOT FOR USE IN DIAGNOSTIC OR THERAPEUTIC PROCEDURES'.