

Dcun1d4 antibody - middle region

Rabbit Polyclonal Antibody

Catalog # AI14524

Product Information

| | |
|--------------------------|--|
| Application | WB |
| Primary Accession | Q8CCA0 |
| Other Accession | NM_178896 , NP_849227 |
| Reactivity | Human, Mouse, Rat, Rabbit, Zebrafish, Pig, Dog, Guinea Pig, Horse, Bovine |
| Predicted | Human, Mouse, Rat, Rabbit, Zebrafish, Pig, Chicken, Dog, Guinea Pig, Horse |
| Host | Rabbit |
| Clonality | Polyclonal |
| Calculated MW | 33939 |

Additional Information

| | |
|-------------------------------------|--|
| Gene ID | 100737 |
| Alias Symbol | AI836376, MGC117952 |
| Other Names | DCN1-like protein 4, DCUN1 domain-containing protein 4, Defective in cullin neddylation protein 1-like protein 4, Dcun1d4 |
| Format | Liquid. Purified antibody supplied in 1x PBS buffer with 0.09% (w/v) sodium azide and 2% sucrose. |
| Reconstitution & Storage | Add 50 ul of distilled water. Final anti-Dcun1d4 antibody concentration is 1 mg/ml in PBS buffer with 2% sucrose. For longer periods of storage, store at 20°C. Avoid repeat freeze-thaw cycles. |
| Precautions | Dcun1d4 antibody - middle region is for research use only and not for use in diagnostic or therapeutic procedures. |

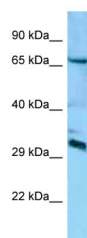
Protein Information

| | |
|--------------------------|--|
| Name | Dcun1d4 {ECO:0000312 MGI:MGI:2140972} |
| Function | Contributes to the neddylation of all cullins by transferring NEDD8 from N-terminally acetylated NEDD8-conjugating E2s enzyme to different cullin C-terminal domain-RBX complexes which are necessary for the activation of cullin-RING E3 ubiquitin ligases (CRLs). |
| Cellular Location | Nucleus {ECO:0000250 UniProtKB:Q92564}. |
| Tissue Location | Highest levels of expression are in the testis (PubMed:26792857). Very low levels of expression in other tissues such as the heart, brain, kidney, liver, lung and ovary (PubMed:26792857) |

References

Carninci P., et al. Science 309:1559-1563(2005).

Images



WB Suggested Anti-Dcun1d4 Antibody Titration: 1.0 µg/ml
Positive Control: Mouse Brain

Please note: All products are 'FOR RESEARCH USE ONLY. NOT FOR USE IN DIAGNOSTIC OR THERAPEUTIC PROCEDURES'.