

Utp15 antibody - middle region

Rabbit Polyclonal Antibody

Catalog # AI14526

Product Information

Application	WB
Primary Accession	Q8C7V3
Other Accession	NM_178918 , NP_849249
Reactivity	Human, Mouse, Rat, Rabbit, Pig, Dog, Guinea Pig, Horse, Bovine
Predicted	Human, Mouse, Rat, Rabbit, Pig, Dog, Guinea Pig, Horse, Bovine
Host	Rabbit
Clonality	Polyclonal
Calculated MW	59375

Additional Information

Gene ID	105372
Alias Symbol	AW544865
Other Names	U3 small nucleolar RNA-associated protein 15 homolog, Src-associated protein SAW, Utp15
Format	Liquid. Purified antibody supplied in 1x PBS buffer with 0.09% (w/v) sodium azide and 2% sucrose.
Reconstitution & Storage	Add 50 ul of distilled water. Final anti-Utp15 antibody concentration is 1 mg/ml in PBS buffer with 2% sucrose. For longer periods of storage, store at 20°C. Avoid repeat freeze-thaw cycles.
Precautions	Utp15 antibody - middle region is for research use only and not for use in diagnostic or therapeutic procedures.

Protein Information

Name	Utp15
Function	Ribosome biogenesis factor. Involved in nucleolar processing of pre-18S ribosomal RNA. Required for optimal pre-ribosomal RNA transcription by RNA polymerase I. Part of the small subunit (SSU) processome, first precursor of the small eukaryotic ribosomal subunit. During the assembly of the SSU processome in the nucleolus, many ribosome biogenesis factors, an RNA chaperone and ribosomal proteins associate with the nascent pre-rRNA and work in concert to generate RNA folding, modifications, rearrangements and cleavage as well as targeted degradation of pre-ribosomal RNA by the RNA exosome.

Cellular Location

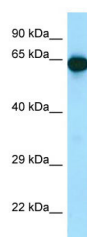
Nucleus, nucleolus {ECO:0000250|UniProtKB:Q8TED0}. Note=Found predominantly at the fibrillar center. {ECO:0000250|UniProtKB:Q8TED0}

References

Baker S.J.,et al.Submitted (SEP-2002) to the EMBL/GenBank/DDBJ databases.

Carninci P.,et al.Science 309:1559-1563(2005).

Images



Host: Rabbit

Target Name: Utp15

Antibody Dilution: 0.25µg/ml

Sample Tissue: Mouse Pancreas

Please note: All products are 'FOR RESEARCH USE ONLY. NOT FOR USE IN DIAGNOSTIC OR THERAPEUTIC PROCEDURES'.