

# PRAC antibody - N-terminal region

Rabbit Polyclonal Antibody

Catalog # AI14530

## Product Information

---

<b>Application</b>	WB
<b>Primary Accession</b>	<a href="#">Q96KF2</a>
<b>Other Accession</b>	<a href="#">NM_032391</a> , <a href="#">NP_115767</a>
<b>Reactivity</b>	Human
<b>Predicted</b>	Human
<b>Host</b>	Rabbit
<b>Clonality</b>	Polyclonal
<b>Calculated MW</b>	5959

## Additional Information

---

<b>Gene ID</b>	84366
<b>Alias Symbol</b>	C17orf92, MGC32520
<b>Other Names</b>	Small nuclear protein PRAC1, Prostate cancer susceptibility candidate protein 1, Prostate, rectum and colon expressed gene protein, PRAC1, C17orf92, PRAC
<b>Format</b>	Liquid. Purified antibody supplied in 1x PBS buffer with 0.09% (w/v) sodium azide and 2% sucrose.
<b>Reconstitution &amp; Storage</b>	Add 50 ul of distilled water. Final anti-PRAC antibody concentration is 1 mg/ml in PBS buffer with 2% sucrose. For longer periods of storage, store at 20°C. Avoid repeat freeze-thaw cycles.
<b>Precautions</b>	PRAC antibody - N-terminal region is for research use only and not for use in diagnostic or therapeutic procedures.

## Protein Information

---

<b>Name</b>	PRAC1
<b>Synonyms</b>	C17orf92, PRAC
<b>Cellular Location</b>	Nucleus.
<b>Tissue Location</b>	Highly expressed in prostate, rectum, and distal colon, and weakly expressed in bladder. Expressed in prostate cancer cell lines.

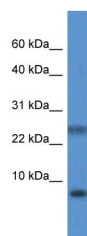
## References

---

Liu X.F.,et al.Prostate 47:125-131(2001).  
Zody M.C.,et al.Nature 440:1045-1049(2006).  
Mural R.J.,et al.Submitted (SEP-2005) to the EMBL/GenBank/DDBJ databases.

## Images

---



WB Suggested Anti-PRAC Antibody Titration: 1.0 µg/ml  
Positive Control: Fetal Liver

Please note: All products are 'FOR RESEARCH USE ONLY. NOT FOR USE IN DIAGNOSTIC OR THERAPEUTIC PROCEDURES'.