

TUBA1C antibody - C-terminal region

Rabbit Polyclonal Antibody

Catalog # AI14536

Product Information

Application	WB, IHC, IP
Primary Accession	Q9NY65
Other Accession	NM_032704 , NP_116093
Reactivity	Human, Mouse, Rat, Zebrafish, Pig, Dog
Predicted	Human, Mouse, Rat, Zebrafish, Pig, Dog
Host	Rabbit
Clonality	Polyclonal
Calculated MW	50094

Additional Information

Gene ID	51807
Alias Symbol	MGC10851, MGC14580, TUBA6, bcm948
Other Names	Tubulin alpha-8 chain, Alpha-tubulin 8, Tubulin alpha chain-like 2, TUBA8, TUBAL2
Format	Liquid. Purified antibody supplied in 1x PBS buffer with 0.09% (w/v) sodium azide and 2% sucrose.
Reconstitution & Storage	Add 50 ul of distilled water. Final anti-TUBA1C antibody concentration is 1 mg/ml in PBS buffer with 2% sucrose. For longer periods of storage, store at 20°C. Avoid repeat freeze-thaw cycles.
Precautions	TUBA1C antibody - C-terminal region is for research use only and not for use in diagnostic or therapeutic procedures.

Protein Information

Name	TUBA8
Synonyms	TUBAL2
Function	Tubulin is the major constituent of microtubules, a cylinder consisting of laterally associated linear protofilaments composed of alpha- and beta-tubulin heterodimers. Microtubules grow by the addition of GTP-tubulin dimers to the microtubule end, where a stabilizing cap forms. Below the cap, tubulin dimers are in GDP-bound state, owing to GTPase activity of alpha-tubulin.
Cellular Location	Cytoplasm, cytoskeleton.

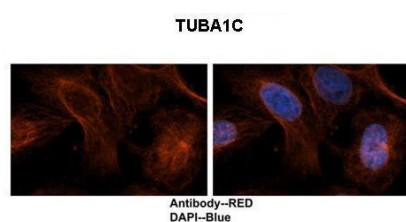
Tissue Location

Preferentially expressed in heart, skeletal muscle and testis. Expressed at low levels in the developing brain. Expressed in megakaryocytes and platelets (PubMed:34704371)

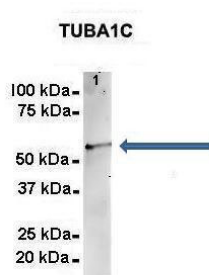
References

Stanchi F.,et al.Biochem. Biophys. Res. Commun. 270:1111-1118(2000).
Collins J.E.,et al.Genome Biol. 5:R84.1-R84.11(2004).
Ota T.,et al.Nat. Genet. 36:40-45(2004).
Dunham I.,et al.Nature 402:489-495(1999).
Mural R.J.,et al.Submitted (JUL-2005) to the EMBL/GenBank/DDBJ databases.

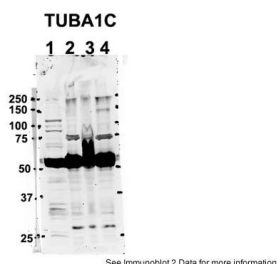
Images



See IHC 1 Data and Customer Feedback for more information



See Other Application 2 Data and Customer Feedback for more information



See Immunoblot 2 Data for more information.

Sample Type : Human brain stem cells
Primary Antibody Dilution : 1:500
Secondary Antibody : Goat anti-rabbit Alexa-Fluor 594
Secondary Antibody Dilution : 1:1000 Color/Signal
Descriptions : TUBA1C: Red DAPI:Blue
Gene Name : TUBA1C Submitted by : Dr. Yuzhi Chen,
University of Arkansas for Medical Science

Amount and Sample Type : 500 ug mouse brain
homogenate Amount of IP Antibody : 6 ug Primary
Antibody : TUBA1C
Primary Antibody Dilution : 1:500
Secondary Antibody : Goat anti-rabbit Alexa-Fluor 594
Secondary Antibody Dilution : 1:5000
Gene Name : TUBA1C Submitted by : Dr. Yuzhi Chen,
University of Arkansas for Medical Science

Sample Type: 1. Human NT-2 cells (60ug) 2. and 3. mouse
brain extracts (80ug) 4. rat brain extract (80ug)
Primary Antibody Dilution: 2µg/ml
Secondary Antibody: IRDye 800CW goat anti-rabbit from
Li-COR Bioscience
Secondary Antibody Dilution: 1: 20,000 Image
Submitted by: Yuzhi Chen University of Arkansas for
Medical Science

Please note: All products are 'FOR RESEARCH USE ONLY. NOT FOR USE IN DIAGNOSTIC OR THERAPEUTIC PROCEDURES'.