

HSDL1 antibody - C-terminal region

Rabbit Polyclonal Antibody

Catalog # AI14541

Product Information

Application	WB
Primary Accession	Q3SXM5
Other Accession	NM_031463 , NP_113651
Reactivity	Human, Mouse, Rat, Rabbit, Dog, Guinea Pig, Horse, Bovine
Predicted	Human, Mouse, Rat, Dog, Guinea Pig, Horse, Bovine
Host	Rabbit
Clonality	Polyclonal
Calculated MW	37002

Additional Information

Gene ID	83693
Alias Symbol	MGC125994, MGC125995, MGC126032, SDR12C3
Other Names	Inactive hydroxysteroid dehydrogenase-like protein 1, HSDL1
Format	Liquid. Purified antibody supplied in 1x PBS buffer with 0.09% (w/v) sodium azide and 2% sucrose.
Reconstitution & Storage	Add 50 ul of distilled water. Final anti-HSDL1 antibody concentration is 1 mg/ml in PBS buffer with 2% sucrose. For longer periods of storage, store at 20°C. Avoid repeat freeze-thaw cycles.
Precautions	HSDL1 antibody - C-terminal region is for research use only and not for use in diagnostic or therapeutic procedures.

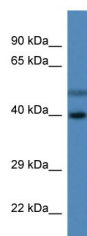
Protein Information

Name	HSDL1
Synonyms	SDR12C3
Cellular Location	Mitochondrion.
Tissue Location	Highly expressed in testis and ovary. Also detected in thyroid, spinal cord, adrenal gland, heart, placenta, skeletal muscle, small intestine, colon, spleen, prostate and pancreas

References

Huang Y.,et al.Mol. Biol. Rep. 28:185-191(2001).
Ota T.,et al.Nat. Genet. 36:40-45(2004).
Martin J.,et al.Nature 432:988-994(2004).
Mural R.J.,et al.Submitted (SEP-2005) to the EMBL/GenBank/DDBJ databases.
Bienvenut W.V.,et al.Submitted (JUL-2008) to UniProtKB.

Images



WB Suggested Anti-HSDL1 Antibody Titration: 1.0 µg/ml
Positive Control: Fetal Liver

Please note: All products are 'FOR RESEARCH USE ONLY. NOT FOR USE IN DIAGNOSTIC OR THERAPEUTIC PROCEDURES'.