

HSH2D antibody - C-terminal region

Rabbit Polyclonal Antibody

Catalog # AI14547

Product Information

Application	WB
Primary Accession	Q96JZ2
Other Accession	NM_032855 , NP_116244
Reactivity	Human, Horse
Predicted	Human
Host	Rabbit
Clonality	Polyclonal
Calculated MW	39002

Additional Information

Gene ID	84941
Alias Symbol	ALX, FLJ14886, HSH2
Other Names	Hematopoietic SH2 domain-containing protein, Hematopoietic SH2 protein, Adaptor in lymphocytes of unknown function X, HSH2D, ALX
Format	Liquid. Purified antibody supplied in 1x PBS buffer with 0.09% (w/v) sodium azide and 2% sucrose.
Reconstitution & Storage	Add 50 ul of distilled water. Final anti-HSH2D antibody concentration is 1 mg/ml in PBS buffer with 2% sucrose. For longer periods of storage, store at 20°C. Avoid repeat freeze-thaw cycles.
Precautions	HSH2D antibody - C-terminal region is for research use only and not for use in diagnostic or therapeutic procedures.

Protein Information

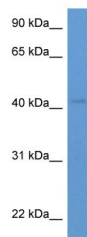
Name	HSH2D
Synonyms	ALX
Function	May be a modulator of the apoptotic response through its ability to affect mitochondrial stability (By similarity). Adapter protein involved in tyrosine kinase and CD28 signaling. Seems to affect CD28-mediated activation of the RE/AP element of the interleukin-2 promoter.
Cellular Location	Cytoplasm. Nucleus.
Tissue Location	Predominantly expressed in spleen and hematopoietic cells such as

peripheral blood leukocytes and weakly expressed in prostate, thymus, heart, small intestine and placenta

References

Oda T.,et al.Biochem. Biophys. Res. Commun. 288:1078-1086(2001).
Greene T.A.,et al.J. Biol. Chem. 278:45128-45134(2003).
Ota T.,et al.Nat. Genet. 36:40-45(2004).
Grimwood J.,et al.Nature 428:529-535(2004).
Mural R.J.,et al.Submitted (JUL-2005) to the EMBL/GenBank/DDBJ databases.

Images



WB Suggested Anti-HSH2D Antibody Titration: 0.2-1 µg/ml
ELISA Titer: 1:62500
Positive Control: Human kidney

Please note: All products are 'FOR RESEARCH USE ONLY. NOT FOR USE IN DIAGNOSTIC OR THERAPEUTIC PROCEDURES'.