

PRPF38A antibody - C-terminal region

Rabbit Polyclonal Antibody

Catalog # AI14549

Product Information

Application	WB
Primary Accession	Q8NAV1
Other Accession	NM_032864 , NP_116253
Reactivity	Human, Mouse, Rat, Rabbit, Zebrafish, Pig, Dog, Guinea Pig, Horse, Bovine
Predicted	Mouse, Rat, Pig, Chicken, Dog
Host	Rabbit
Clonality	Polyclonal
Calculated MW	37477

Additional Information

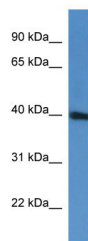
Gene ID	84950
Alias Symbol	FLJ14936, MGC3320, Prp38, RP5-965L7.1
Other Names	Pre-mRNA-splicing factor 38A, PRPF38A
Format	Liquid. Purified antibody supplied in 1x PBS buffer with 0.09% (w/v) sodium azide and 2% sucrose.
Reconstitution & Storage	Add 50 ul of distilled water. Final anti-PRPF38A antibody concentration is 1 mg/ml in PBS buffer with 2% sucrose. For longer periods of storage, store at 20°C. Avoid repeat freeze-thaw cycles.
Precautions	PRPF38A antibody - C-terminal region is for research use only and not for use in diagnostic or therapeutic procedures.

Protein Information

Name	PRPF38A
Function	Involved in pre-mRNA splicing as a component of the spliceosome.
Cellular Location	Nucleus.

Images

WB Suggested Anti-PRPF38A Antibody Titration: 0.2-1
µg/ml



ELISA Titer: 1:62500
Positive Control: Jurkat cell lysate

Please note: All products are 'FOR RESEARCH USE ONLY. NOT FOR USE IN DIAGNOSTIC OR THERAPEUTIC PROCEDURES'.