

# PNMA6A antibody - N-terminal region

Rabbit Polyclonal Antibody

Catalog # AI14551

## Product Information

---

<b>Application</b>	WB
<b>Primary Accession</b>	<a href="#">P0C5W0</a>
<b>Other Accession</b>	<a href="#">NM_032882</a> , <a href="#">NP_116271</a>
<b>Reactivity</b>	Human, Dog
<b>Predicted</b>	Dog
<b>Host</b>	Rabbit
<b>Clonality</b>	Polyclonal
<b>Calculated MW</b>	44 KDa

## Additional Information

---

<b>Alias Symbol</b>	MA6, MGC15827, PNMA6
<b>Other Names</b>	Paraneoplastic antigen-like protein 6B, PNMA6B
<b>Format</b>	Liquid. Purified antibody supplied in 1x PBS buffer with 0.09% (w/v) sodium azide and 2% sucrose.
<b>Reconstitution &amp; Storage</b>	Add 50 ul of distilled water. Final anti-PNMA6A antibody concentration is 1 mg/ml in PBS buffer with 2% sucrose. For longer periods of storage, store at 20°C. Avoid repeat freeze-thaw cycles.
<b>Precautions</b>	PNMA6A antibody - N-terminal region is for research use only and not for use in diagnostic or therapeutic procedures.

## Protein Information

---

## References

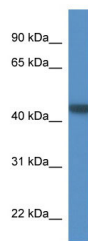
---

Ross M.T., et al. Nature 434:325-337(2005).

## Images

---

WB Suggested Anti-PNMA6A Antibody Titration: 0.2-1  
µg/ml  
ELISA Titer: 1:312500  
Positive Control: Human Lung



Please note: All products are 'FOR RESEARCH USE ONLY. NOT FOR USE IN DIAGNOSTIC OR THERAPEUTIC PROCEDURES'.