

XAGE1D antibody - C-terminal region

Rabbit Polyclonal Antibody

Catalog # AI14554

Product Information

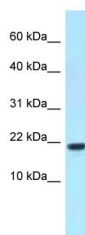
Application	WB
Primary Accession	Q9HD64.3
Other Accession	NM_133431 , NP_597674
Reactivity	Human, Pig, Dog
Predicted	Human, Pig, Dog
Host	Rabbit
Clonality	Polyclonal
Calculated MW	18 kDa

Additional Information

Alias Symbol	CT12.1D, CTP9, XAGE1A, XAGE1B, XAGE1C, XAGE1E, CT12.1
Format	Liquid. Purified antibody supplied in 1x PBS buffer with 0.09% (w/v) sodium azide and 2% sucrose.
Reconstitution & Storage	Add 50 ul of distilled water. Final anti-XAGE1D antibody concentration is 1 mg/ml in PBS buffer with 2% sucrose. For longer periods of storage, store at 20°C. Avoid repeat freeze-thaw cycles.
Precautions	XAGE1D antibody - C-terminal region is for research use only and not for use in diagnostic or therapeutic procedures.

Protein Information

Images



WB Suggested Anti-XAGE1D Antibody Titration: 1.0 µg/ml
Positive Control: Fetal kidney