

# IL32 Antibody - middle region

Rabbit Polyclonal Antibody

Catalog # AI14557

## Product Information

---

<b>Application</b>	WB
<b>Primary Accession</b>	<a href="#">P24001</a>
<b>Reactivity</b>	Human
<b>Host</b>	Rabbit
<b>Clonality</b>	Polyclonal
<b>Calculated MW</b>	26676

## Additional Information

---

<b>Gene ID</b>	9235
<b>Alias Symbol</b> <b>Other Names</b>	Name=IL32, Interleukin-32, IL-32, Natural killer cells protein 4, Tumor necrosis factor alpha-inducing factor, IL32, NK4, TAIF
<b>Format</b>	Liquid. Purified antibody supplied in 1x PBS buffer with 0.09% (w/v) sodium azide and 2% sucrose.
<b>Reconstitution &amp; Storage</b>	Add 50 &mu; l of distilled water. Final Anti-IL32 antibody concentration is 1 mg/ml in PBS buffer with 2% sucrose. For longer periods of storage, store at -20°C. Avoid repeat freeze-thaw cycles.
<b>Precautions</b>	IL32 Antibody - middle region is for research use only and not for use in diagnostic or therapeutic procedures.

## Protein Information

---

<b>Name</b>	IL32
<b>Synonyms</b>	NK4, TAIF
<b>Function</b>	Cytokine that may play a role in innate and adaptive immune responses. It induces various cytokines such as TNFA/TNF-alpha and IL8. It activates typical cytokine signal pathways of NF-kappa-B and p38 MAPK.
<b>Cellular Location</b>	Secreted.
<b>Tissue Location</b>	Selectively expressed in lymphocytes. Expression is more prominent in immune cells than in non-immune cells

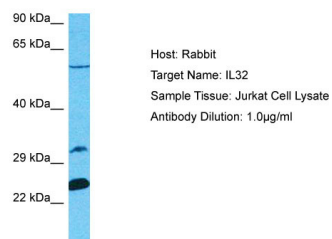
## References

---

Dahl C.A.,et al.J. Immunol. 148:597-603(1992).  
Kim S.-H.,et al.Immunity 22:131-142(2005).  
Mao W.,et al.Submitted (DEC-2007) to the EMBL/GenBank/DDBJ databases.  
Ota T.,et al.Nat. Genet. 36:40-45(2004).  
Oh J.H.,et al.Mamm. Genome 16:942-954(2005).

## Images

---



Host: Rabbit  
Target Name: IL32  
Sample Tissue: Jurkat Whole cell lysate  
S  
Antibody Dilution: 1.0µg/ml

Please note: All products are 'FOR RESEARCH USE ONLY. NOT FOR USE IN DIAGNOSTIC OR THERAPEUTIC PROCEDURES'.