

ENO2 antibody - middle region

Rabbit Polyclonal Antibody

Catalog # AI14564

Product Information

Application	WB
Primary Accession	P09104
Other Accession	NM_001975 , NP_001966
Reactivity	Human, Mouse, Rat, Rabbit, Zebrafish, Goat, Dog, Guinea Pig, Horse, Bovine, Sheep
Predicted Host	Human, Mouse, Rabbit, Zebrafish, Chicken, Guinea Pig, Horse, Bovine
Clonality	Rabbit
Calculated MW	Polyclonal 47269

Additional Information

Gene ID	2026
Alias Symbol	NSE
Other Names	Gamma-enolase, 4.2.1.11, 2-phospho-D-glycerate hydro-lyase, Enolase 2, Neural enolase, Neuron-specific enolase, NSE, ENO2
Format	Liquid. Purified antibody supplied in 1x PBS buffer with 0.09% (w/v) sodium azide and 2% sucrose.
Reconstitution & Storage	Add 50 ul of distilled water. Final anti-ENO2 antibody concentration is 1 mg/ml in PBS buffer with 2% sucrose. For longer periods of storage, store at 20°C. Avoid repeat freeze-thaw cycles.
Precautions	ENO2 antibody - middle region is for research use only and not for use in diagnostic or therapeutic procedures.

Protein Information

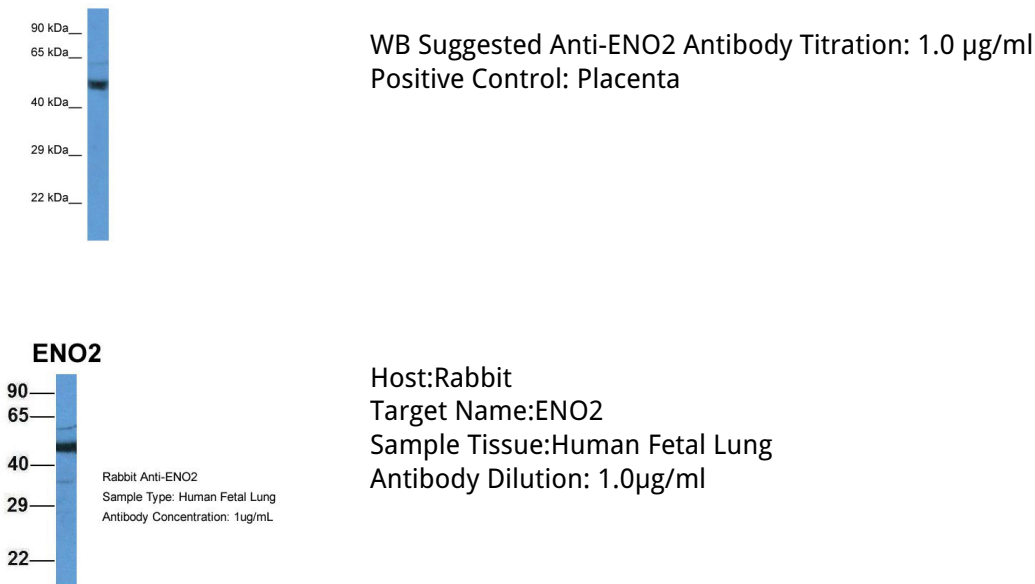
Name	ENO2
Function	Has neurotrophic and neuroprotective properties on a broad spectrum of central nervous system (CNS) neurons. Binds, in a calcium- dependent manner, to cultured neocortical neurons and promotes cell survival (By similarity).
Cellular Location	Cytoplasm. Cell membrane. Note=Can translocate to the plasma membrane in either the homodimeric (alpha/alpha) or heterodimeric (alpha/gamma) form

Tissue Location	The alpha/alpha homodimer is expressed in embryo and in most adult tissues. The alpha/beta heterodimer and the beta/beta homodimer are found in striated muscle, and the alpha/gamma heterodimer and the gamma/gamma homodimer in neurons
------------------------	---

References

McAleese S.M.,et al.Eur. J. Biochem. 178:413-417(1988).
 van Obberghen E.,et al.J. Neurosci. Res. 19:450-456(1988).
 Oliva D.,et al.Gene 79:355-360(1989).
 Oliva D.,et al.Genomics 10:157-165(1991).
 Ansari-Lari M.A.,et al.Genome Res. 7:268-280(1997).

Images



Please note: All products are 'FOR RESEARCH USE ONLY. NOT FOR USE IN DIAGNOSTIC OR THERAPEUTIC PROCEDURES'.