

# ACSBG1 Antibody - N-terminal region

Rabbit Polyclonal Antibody

Catalog # AI14569

## Product Information

Application	WB
Primary Accession	<a href="#">Q96GR2</a>
Other Accession	<a href="#">NM_015162</a> , <a href="#">NP_055977</a>
Reactivity	Human
Predicted	Human
Host	Rabbit
Clonality	Polyclonal
Calculated MW	81290

## Additional Information

Gene ID	23205
Alias Symbol	BG, BG1, BGM, GR-LACS, LPD
Other Names	Long-chain-fatty-acid--CoA ligase ACSBG1, 6.2.1.3, Acyl-CoA synthetase bubblegum family member 1, hBG1, hsBG, hsBGM, Lipidosin, ACSBG1, BGM, KIAA0631, LPD
Format	Liquid. Purified antibody supplied in 1x PBS buffer with 0.09% (w/v) sodium azide and 2% sucrose.
Reconstitution & Storage	Add 50 $\mu$ l of distilled water. Final Anti-ACSBG1 antibody concentration is 1 mg/ml in PBS buffer with 2% sucrose. For longer periods of storage, store at -20°C. Avoid repeat freeze-thaw cycles.
Precautions	ACSBG1 Antibody - N-terminal region is for research use only and not for use in diagnostic or therapeutic procedures.

## Protein Information

Name	ACSBG1 ( <a href="#">HGNC:29567</a> )
Synonyms	BGM, KIAA0631, LPD
Function	Catalyzes the conversion of fatty acids such as long-chain and very long-chain fatty acids to their active form acyl-CoAs for both synthesis of cellular lipids, and degradation via beta-oxidation (PubMed: <a href="#">10954726</a> , PubMed: <a href="#">12975357</a> , PubMed: <a href="#">24269233</a> ). Can activate diverse saturated, monosaturated and polyunsaturated fatty acids (PubMed: <a href="#">10954726</a> ).
Cellular Location	Cytoplasm. Cytoplasmic vesicle. Microsome. Endoplasmic reticulum. Cell

membrane

## Tissue Location

Expressed primarily in brain. Expressed at lower level in testis and adrenal gland. Present in all regions of brain except pituitary.

## References

---

Steinberg S.J.,et al.J. Biol. Chem. 275:35162-35169(2000).

Ishikawa K.,et al.DNA Res. 5:169-176(1998).

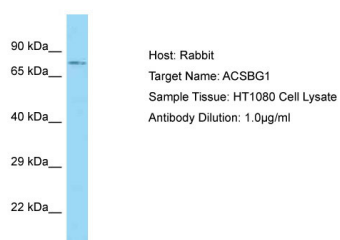
Nakajima D.,et al.DNA Res. 9:99-106(2002).

Ota T.,et al.Nat. Genet. 36:40-45(2004).

Zody M.C.,et al.Nature 440:671-675(2006).

## Images

---



Host: Rabbit

Target Name: ACSBG1

Sample Tissue: HT1080 Whole cell lysate

S

Antibody Dilution: 1.0µg/ml

Please note: All products are 'FOR RESEARCH USE ONLY. NOT FOR USE IN DIAGNOSTIC OR THERAPEUTIC PROCEDURES'.