

AGPAT3 antibody - middle region

Rabbit Polyclonal Antibody

Catalog # AI14571

Product Information

Application	WB
Primary Accession	Q9NRZ7
Other Accession	NM_020132 , NP_064517
Reactivity	Human, Mouse, Rat, Zebrafish, Pig, Dog, Guinea Pig, Horse, Bovine
Predicted	Human, Mouse, Rat, Zebrafish, Pig, Chicken, Dog, Guinea Pig, Horse, Bovine
Host	Rabbit
Clonality	Polyclonal
Calculated MW	43381

Additional Information

Gene ID	56894
Alias Symbol	LPAAT-GAMMA1, MGC4604
Other Names	1-acyl-sn-glycerol-3-phosphate acyltransferase gamma, 2.3.1.51, 1-acylglycerol-3-phosphate O-acyltransferase 3, 1-AGP acyltransferase 3, 1-AGPAT 3, Lysophosphatidic acid acyltransferase gamma, LPAAT-gamma, AGPAT3, LPAAT3
Format	Liquid. Purified antibody supplied in 1x PBS buffer with 0.09% (w/v) sodium azide and 2% sucrose.
Reconstitution & Storage	Add 50 ul of distilled water. Final anti-AGPAT3 antibody concentration is 1 mg/ml in PBS buffer with 2% sucrose. For longer periods of storage, store at 20°C. Avoid repeat freeze-thaw cycles.
Precautions	AGPAT3 antibody - middle region is for research use only and not for use in diagnostic or therapeutic procedures.

Protein Information

Name	AGPAT3
Synonyms	LPAAT3
Function	Converts 1-acyl-sn-glycerol-3-phosphate (lysophosphatidic acid or LPA) into 1,2-diacyl-sn-glycerol-3-phosphate (phosphatidic acid or PA) by incorporating an acyl moiety at the sn-2 position of the glycerol backbone (PubMed: 21173190). Acts on LPA containing saturated or unsaturated fatty acids C16:0-C20:4 at the sn-1 position using C18:1, C20:4 or C18:2-CoA as the acyl donor (PubMed: 21173190). Also acts on lysophosphatidylcholine,

lysophosphatidylinositol and lysophosphatidylserine using C18:1 or C20:4-CoA (PubMed:[21173190](#)). Has a preference for arachidonoyl-CoA as a donor (By similarity). Also has a modest lysophosphatidylinositol acyltransferase (LPIAT) activity, converts lysophosphatidylinositol (LPI) into phosphatidylinositol (By similarity).

Cellular Location

Endoplasmic reticulum membrane; Multi-pass membrane protein. Nucleus envelope

Tissue Location

Widely expressed with highest levels in testis, pancreas and kidney, followed by spleen, lung, adipose tissue and liver.

References

Leung D.W.,et al.Front. Biosci. 6:D944-D953(2001).

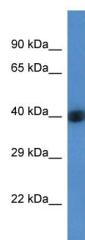
Nagamine K.,et al.Submitted (MAR-2000) to the EMBL/GenBank/DDBJ databases.

Clark H.F.,et al.Genome Res. 13:2265-2270(2003).

Hattori M.,et al.Nature 405:311-319(2000).

Mural R.J.,et al.Submitted (SEP-2005) to the EMBL/GenBank/DDBJ databases.

Images



WB Suggested Anti-AGPAT3 Antibody Titration: 1.0 µg/ml
Positive Control: Fetal Liver

Please note: All products are 'FOR RESEARCH USE ONLY. NOT FOR USE IN DIAGNOSTIC OR THERAPEUTIC PROCEDURES'.