

# ADIPOR2 antibody - C-terminal region

Rabbit Polyclonal Antibody

Catalog # AI14577

## Product Information

Application	WB
Primary Accession	<a href="#">Q86V24</a>
Other Accession	<a href="#">NM_024551</a> , <a href="#">NP_078827</a>
Reactivity	Human, Mouse, Rat, Rabbit, Goat, Dog, Guinea Pig, Horse, Bovine
Predicted	Mouse, Rat, Rabbit, Pig, Dog, Horse, Bovine
Host	Rabbit
Clonality	Polyclonal
Calculated MW	43884

## Additional Information

Gene ID	79602
Alias Symbol	ACDCR2, FLJ21432, MGC4640, PAQR2
Other Names	Adiponectin receptor protein 2, Progestin and adipoQ receptor family member II, ADIPOR2, PAQR2
Format	Liquid. Purified antibody supplied in 1x PBS buffer with 0.09% (w/v) sodium azide and 2% sucrose.
Reconstitution & Storage	Add 50 ul of distilled water. Final anti-ADIPOR2 antibody concentration is 1 mg/ml in PBS buffer with 2% sucrose. For longer periods of storage, store at 20°C. Avoid repeat freeze-thaw cycles.
Precautions	ADIPOR2 antibody - C-terminal region is for research use only and not for use in diagnostic or therapeutic procedures.

## Protein Information

Name	ADIPOR2 ( <a href="#">HGNC:24041</a> )
Function	Receptor for ADIPOQ, an essential hormone secreted by adipocytes that regulates glucose and lipid metabolism (PubMed: <a href="#">12802337</a> , PubMed: <a href="#">25855295</a> ). Required for normal body fat and glucose homeostasis. ADIPOQ-binding activates a signaling cascade that leads to increased PPARA activity, and ultimately to increased fatty acid oxidation and glucose uptake. Has intermediate affinity for globular and full-length adiponectin. Required for normal revascularization after chronic ischemia caused by severing of blood vessels (By similarity).
Cellular Location	Cell membrane; Multi-pass membrane protein Note=Localized to the cell

membrane and intracellular organelles

## Tissue Location

Ubiquitous (PubMed:16044242). Highly expressed in skeletal muscle, liver and placenta (PubMed:12802337). Weakly expressed in brain, heart, colon, spleen, kidney, thymus, small intestine, peripheral blood leukocytes and lung (PubMed:12802337)

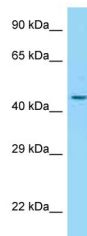
## References

---

Tang Y.T.,et al.J. Mol. Evol. 61:372-380(2005).  
Ota T.,et al.Nat. Genet. 36:40-45(2004).  
Mural R.J.,et al.Submitted (SEP-2005) to the EMBL/GenBank/DDBJ databases.  
Yamauchi T.,et al.Nature 423:762-769(2003).

## Images

---



WB Suggested Anti-ADIPOR2 Antibody Titration: 1.0 µg/ml  
Positive Control: OVCAR-3 Whole Cell

Please note: All products are 'FOR RESEARCH USE ONLY. NOT FOR USE IN DIAGNOSTIC OR THERAPEUTIC PROCEDURES'.