

KRA21 Antibody - C-terminal region

Rabbit Polyclonal Antibody

Catalog # AI14584

Product Information

Application	WB
Primary Accession	Q9BYU5
Reactivity	Human
Predicted	Human, Mouse, Rat
Host	Rabbit
Clonality	Polyclonal
Calculated MW	13514

Additional Information

Gene ID	728279;81872
Alias Symbol Other Names	KRTAP2-1, KAP2.1, KRTAP2.1A, KRTAP2.1B, Keratin-associated protein 2-1, High sulfur keratin-associated protein 2.1, Keratin-associated protein 2.1, KRTAP2-1, KAP2.1, KRTAP2.1A, KRTAP2.1B
Format	Liquid. Purified antibody supplied in 1x PBS buffer with 0.09% (w/v) sodium azide and 2% sucrose.
Reconstitution & Storage	Add 50 μ l of distilled water. Final Anti-KRA21 antibody concentration is 1 mg/ml in PBS buffer with 2% sucrose. For longer periods of storage, store at -20°C. Avoid repeat freeze-thaw cycles.
Precautions	KRA21 Antibody - C-terminal region is for research use only and not for use in diagnostic or therapeutic procedures.

Protein Information

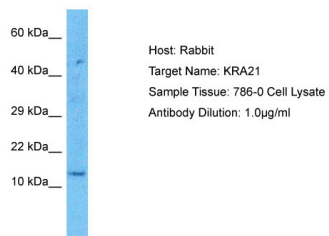
Name	KRTAP2-1
Synonyms	KAP2.1, KRTAP2.1A, KRTAP2.1B
Function	In the hair cortex, hair keratin intermediate filaments are embedded in an interfilamentous matrix, consisting of hair keratin- associated proteins (KRTAP), which are essential for the formation of a rigid and resistant hair shaft through their extensive disulfide bond cross-linking with abundant cysteine residues of hair keratins. The matrix proteins include the high-sulfur and high-glycine-tyrosine keratins (By similarity).

References

Zody M.C.,et al.Nature 440:1045-1049(2006).

Rogers M.A.,et al.J. Biol. Chem. 276:19440-19451(2001).

Images



Host: Rabbit

Target Name: KRA21

Sample Tissue: 786-0 Whole Cell lysates

Antibody Dilution: 1.0µg/ml

Please note: All products are 'FOR RESEARCH USE ONLY. NOT FOR USE IN DIAGNOSTIC OR THERAPEUTIC PROCEDURES'.