

# CTSK antibody - middle region

Rabbit Polyclonal Antibody

Catalog # AI14590

## Product Information

---

<b>Application</b>	WB
<b>Primary Accession</b>	<a href="#">P43235</a>
<b>Other Accession</b>	<a href="#">NM_000396</a> , <a href="#">NP_000387</a>
<b>Reactivity</b>	Human, Mouse, Rat, Rabbit, Zebrafish, Goat, Dog, Guinea Pig, Horse, Bovine
<b>Predicted</b>	Human, Mouse, Zebrafish
<b>Host</b>	Rabbit
<b>Clonality</b>	Polyclonal
<b>Calculated MW</b>	36966

## Additional Information

---

<b>Gene ID</b>	1513
<b>Alias Symbol</b> <b>Other Names</b>	CTSO2, CTSO, CTSO1, CTSO2, MGC23107, PKND, PYCD Cathepsin K, 3.4.22.38, Cathepsin O, Cathepsin O2, Cathepsin X, CTSK, CTSO, CTSO2
<b>Format</b>	Liquid. Purified antibody supplied in 1x PBS buffer with 0.09% (w/v) sodium azide and 2% sucrose.
<b>Reconstitution &amp; Storage</b>	Add 50 ul of distilled water. Final anti-CTSK antibody concentration is 1 mg/ml in PBS buffer with 2% sucrose. For longer periods of storage, store at 20°C. Avoid repeat freeze-thaw cycles.
<b>Precautions</b>	CTSK antibody - middle region is for research use only and not for use in diagnostic or therapeutic procedures.

## Protein Information

---

<b>Name</b>	CTSK
<b>Synonyms</b>	CTSO, CTSO2
<b>Function</b>	Thiol protease involved in osteoclastic bone resorption and may participate partially in the disorder of bone remodeling. Displays potent endoprotease activity against fibrinogen at acid pH. May play an important role in extracellular matrix degradation. Involved in the release of thyroid hormone thyroxine (T4) by limited proteolysis of TG/thyroglobulin in the thyroid follicle lumen (PubMed: <a href="#">11082042</a> ).
<b>Cellular Location</b>	Lysosome. Secreted. Apical cell membrane; Peripheral membrane protein;

Extracellular side. Note=Localizes to the lumen of thyroid follicles and to the apical membrane of thyroid epithelial cells

## Tissue Location

Predominantly expressed in osteoclasts (bones) (PubMed:7805878).  
Expressed in thyroid epithelial cells (PubMed:11082042).

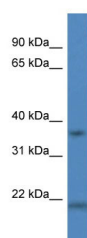
## References

---

Shi G.-P.,et al.FEBS Lett. 357:129-134(1995).  
Inaoka T.,et al.Biochem. Biophys. Res. Commun. 206:89-96(1995).  
Li Y.,et al.J. Bone Miner. Res. 10:1197-1202(1995).  
Broemme D.,et al.Biol. Chem. Hoppe-Seyler 376:379-384(1995).  
Ebert L.,et al.Submitted (JUN-2004) to the EMBL/GenBank/DDBJ databases.

## Images

---



WB Suggested Anti-CTSK Antibody Titration: 1.0 µg/ml  
Positive Control: Fetal Liver

Please note: All products are 'FOR RESEARCH USE ONLY. NOT FOR USE IN DIAGNOSTIC OR THERAPEUTIC PROCEDURES'.