

LYG2 antibody - N-terminal region

Rabbit Polyclonal Antibody

Catalog # AI14592

Product Information

Application	WB
Primary Accession	Q86SG7
Other Accession	NM_175735 , NP_783862
Reactivity	Human
Predicted	Human
Host	Rabbit
Clonality	Polyclonal
Calculated MW	23498

Additional Information

Gene ID	254773
Alias Symbol Other Names	LYGH, MGC119046, MGC119047, MGC119049 Lysozyme g-like protein 2, 3.2.1.-, LYG2, LYGH
Format	Liquid. Purified antibody supplied in 1x PBS buffer with 0.09% (w/v) sodium azide and 2% sucrose.
Reconstitution & Storage	Add 50 ul of distilled water. Final anti-LYG2 antibody concentration is 1 mg/ml in PBS buffer with 2% sucrose. For longer periods of storage, store at 20°C. Avoid repeat freeze-thaw cycles.
Precautions	LYG2 antibody - N-terminal region is for research use only and not for use in diagnostic or therapeutic procedures.

Protein Information

Name	LYG2
Synonyms	LYGH
Function	May act as a potent antibacterial protein that may play a role in the innate immunity.
Cellular Location	Secreted.
Tissue Location	Strong expression detected in the eye and weak expression in the testis. No expression is observed in any other tissues.

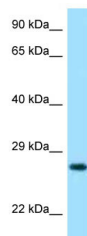
References

Irwin D.M.,et al.J. Mol. Evol. 56:234-242(2003).

Hillier L.W.,et al.Nature 434:724-731(2005).

Yu L.,et al.Submitted (JAN-2001) to the EMBL/GenBank/DDBJ databases.

Images



WB Suggested Anti-LYG2 Antibody Titration: 1.0 µg/ml
Positive Control: MDA-MB-435S Whole Cell

Please note: All products are 'FOR RESEARCH USE ONLY. NOT FOR USE IN DIAGNOSTIC OR THERAPEUTIC PROCEDURES'.