

# HIST1H2AE antibody - middle region

Rabbit Polyclonal Antibody

Catalog # AI14597

## Product Information

---

<b>Application</b>	WB
<b>Primary Accession</b>	<a href="#">Q7L7L0</a>
<b>Other Accession</b>	<a href="#">NM_021052</a> , <a href="#">NP_066390</a>
<b>Reactivity</b>	Human, Rat, Pig, Bovine
<b>Predicted</b>	Human, Rat, Pig, Bovine
<b>Host</b>	Rabbit
<b>Clonality</b>	Polyclonal
<b>Calculated MW</b>	14121

## Additional Information

---

<b>Gene ID</b>	92815
<b>Alias Symbol</b> <b>Other Names</b>	H2A.1, H2A.2, H2A/a, H2AFA, HIST1H2AB Histone H2A type 3, HIST3H2A
<b>Format</b>	Liquid. Purified antibody supplied in 1x PBS buffer with 0.09% (w/v) sodium azide and 2% sucrose.
<b>Reconstitution &amp; Storage</b>	Add 50 ul of distilled water. Final anti-HIST1H2AE antibody concentration is 1 mg/ml in PBS buffer with 2% sucrose. For longer periods of storage, store at 20°C. Avoid repeat freeze-thaw cycles.
<b>Precautions</b>	HIST1H2AE antibody - middle region is for research use only and not for use in diagnostic or therapeutic procedures.

## Protein Information

---

<b>Name</b>	H2AC25 ( <a href="#">HGNC:20507</a> )
<b>Function</b>	Core component of nucleosome. Nucleosomes wrap and compact DNA into chromatin, limiting DNA accessibility to the cellular machineries which require DNA as a template. Histones thereby play a central role in transcription regulation, DNA repair, DNA replication and chromosomal stability. DNA accessibility is regulated via a complex set of post-translational modifications of histones, also called histone code, and nucleosome remodeling.
<b>Cellular Location</b>	Nucleus. Chromosome.

## References

---

Marzluff W.F.,et al.Genomics 80:487-498(2002).

Ota T.,et al.Nat. Genet. 36:40-45(2004).

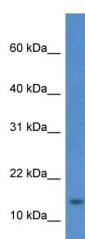
Gregory S.G.,et al.Nature 441:315-321(2006).

Mural R.J.,et al.Submitted (JUL-2005) to the EMBL/GenBank/DDBJ databases.

Aihara H.,et al.Genes Dev. 18:877-888(2004).

## Images

---



WB Suggested Anti-HIST1H2AE Antibody Titration: 1.0  
µg/ml

Positive Control: RPMI-8226 Whole Cell

Please note: All products are 'FOR RESEARCH USE ONLY. NOT FOR USE IN DIAGNOSTIC OR THERAPEUTIC PROCEDURES'.