

# CD34 antibody - C-terminal region

Rabbit Polyclonal Antibody

Catalog # AI14599

## Product Information

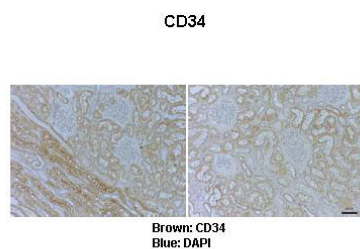
<b>Application</b>	WB, IHC
<b>Primary Accession</b>	<a href="#">Q3C1E7</a>
<b>Other Accession</b>	<a href="#">NM_001773</a> , <a href="#">NP_001764</a>
<b>Reactivity</b>	Human, Mouse, Rat, Rabbit, Pig, Goat, Dog, Guinea Pig
<b>Predicted</b>	Human, Mouse, Rabbit, Pig, Dog, Guinea Pig
<b>Host</b>	Rabbit
<b>Clonality</b>	Polyclonal
<b>Calculated MW</b>	35 KDa

## Additional Information

<b>Format</b>	Liquid. Purified antibody supplied in 1x PBS buffer with 0.09% (w/v) sodium azide and 2% sucrose.
<b>Reconstitution &amp; Storage</b>	Add 50 ul of distilled water. Final anti-CD34 antibody concentration is 1 mg/ml in PBS buffer with 2% sucrose. For longer periods of storage, store at 20°C. Avoid repeat freeze-thaw cycles.
<b>Precautions</b>	CD34 antibody - C-terminal region is for research use only and not for use in diagnostic or therapeutic procedures.

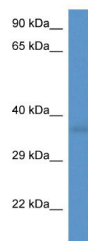
## Protein Information

## Images



Sample Type : Human kidney  
Primary Antibody Dilution : 1:1000  
Secondary Antibody : Anti-rabbit-HRP Secondary Antibody  
Dilution : 1:5000 Color/Signal Descriptions : Brown: CD34  
Blue: DAPI  
Gene Name : CD34 Submitted by : Christina  
Theodoropoulos, Queensland Univ. of Technology

WB Suggested Anti-CD34 Antibody Titration: 1.0 µg/ml  
Positive Control: Fetal Heart



Please note: All products are 'FOR RESEARCH USE ONLY. NOT FOR USE IN DIAGNOSTIC OR THERAPEUTIC PROCEDURES'.