

PI15 antibody - N-terminal region

Rabbit Polyclonal Antibody

Catalog # AI14600

Product Information

Application	WB
Primary Accession	O43692
Other Accession	NM_015886 , NP_056970
Reactivity	Human, Mouse, Rat, Rabbit, Zebrafish, Dog, Guinea Pig, Horse, Bovine
Predicted	Human, Mouse, Rat, Rabbit, Zebrafish, Chicken, Dog, Guinea Pig, Bovine
Host	Rabbit
Clonality	Polyclonal
Calculated MW	29065

Additional Information

Gene ID	51050
Alias Symbol	CRISP8, DKFZp686F0366, P24TI, P25TI
Other Names	Peptidase inhibitor 15, PI-15, 25 kDa trypsin inhibitor, p25TI, Cysteine-rich secretory protein 8, CRISP-8, SugarCrisp, PI15, CRISP8, P25TI
Format	Liquid. Purified antibody supplied in 1x PBS buffer with 0.09% (w/v) sodium azide and 2% sucrose.
Reconstitution & Storage	Add 50 ul of distilled water. Final anti-PI15 antibody concentration is 1 mg/ml in PBS buffer with 2% sucrose. For longer periods of storage, store at 20°C. Avoid repeat freeze-thaw cycles.
Precautions	PI15 antibody - N-terminal region is for research use only and not for use in diagnostic or therapeutic procedures.

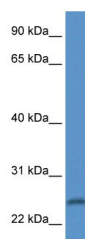
Protein Information

Name	PI15
Synonyms	CRISP8, P25TI
Function	Serine protease inhibitor which displays weak inhibitory activity against trypsin (PubMed: 8882727). May play a role in facial patterning during embryonic development (By similarity).
Cellular Location	Secreted.
Tissue Location	Weakly expressed. Expressed at low level in prostate, mammary gland, salivary gland and thyroid gland

References

Yamakawa T.,et al.Biochim. Biophys. Acta 1395:202-208(1998).
Bechtel S.,et al.BMC Genomics 8:399-399(2007).
Koshikawa N.,et al.J. Biochem. 119:334-339(1996).
Smith D.M.,et al.Mech. Dev. 102:223-226(2001).

Images



WB Suggested Anti-PI15 Antibody Titration: 1.0 µg/ml
Positive Control: Fetal Heart

Please note: All products are 'FOR RESEARCH USE ONLY. NOT FOR USE IN DIAGNOSTIC OR THERAPEUTIC PROCEDURES'.