

ANPEP antibody - N-terminal region

Rabbit Polyclonal Antibody

Catalog # AI14607

Product Information

Application	WB
Primary Accession	P15144
Other Accession	NM_001150 , NP_001141
Reactivity	Human, Rat, Rabbit, Dog, Guinea Pig, Horse
Predicted	Human, Guinea Pig, Horse
Host	Rabbit
Clonality	Polyclonal
Calculated MW	109540

Additional Information

Gene ID	290
Alias Symbol Other Names	APN, CD13, GP150, LAP1, P150, PEPN Aminopeptidase N, AP-N, hAPN, 3.4.11.2, Alanyl aminopeptidase, Aminopeptidase M, AP-M, Microsomal aminopeptidase, Myeloid plasma membrane glycoprotein CD13, gp150, CD13, ANPEP, APN, CD13, PEPN
Format	Liquid. Purified antibody supplied in 1x PBS buffer with 0.09% (w/v) sodium azide and 2% sucrose.
Reconstitution & Storage	Add 50 ul of distilled water. Final anti-ANPEP antibody concentration is 1 mg/ml in PBS buffer with 2% sucrose. For longer periods of storage, store at 20°C. Avoid repeat freeze-thaw cycles.
Precautions	ANPEP antibody - N-terminal region is for research use only and not for use in diagnostic or therapeutic procedures.

Protein Information

Name	ANPEP
Synonyms	APN, CD13, PEPN
Function	Broad specificity aminopeptidase which plays a role in the final digestion of peptides generated from hydrolysis of proteins by gastric and pancreatic proteases. Also involved in the processing of various peptides including peptide hormones, such as angiotensin III and IV, neuropeptides, and chemokines. May also be involved the cleavage of peptides bound to major histocompatibility complex class II molecules of antigen presenting cells. May have a role in angiogenesis and promote cholesterol crystallization. May have

a role in amino acid transport by acting as binding partner of amino acid transporter SLC6A19 and regulating its activity (By similarity).

Cellular Location

Cell membrane; Single-pass type II membrane protein. Note=Also found as a soluble form

Tissue Location

Expressed in epithelial cells of the kidney, intestine, and respiratory tract; granulocytes, monocytes, fibroblasts, endothelial cells, cerebral pericytes at the blood-brain barrier, synaptic membranes of cells in the CNS. Also expressed in endometrial stromal cells, but not in the endometrial glandular cells. Found in the vasculature of tissues that undergo angiogenesis and in malignant gliomas and lymph node metastases from multiple tumor types but not in blood vessels of normal tissues. A soluble form has been found in plasma. It is found to be elevated in plasma and effusions of cancer patients.

References

Olsen J.,et al.FEBS Lett. 238:307-314(1988).

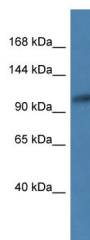
Look A.T.,et al.J. Clin. Invest. 83:1299-1307(1989).

Zody M.C.,et al.Nature 440:671-675(2006).

Shapiro L.H.,et al.J. Biol. Chem. 266:11999-12007(1991).

Eiz-Vesper B.,et al.Submitted (JAN-2002) to the EMBL/GenBank/DDBJ databases.

Images



WB Suggested Anti-ANPEP Antibody Titration: 1.0 µg/ml
Positive Control: Jurkat Whole Cell

Please note: All products are 'FOR RESEARCH USE ONLY. NOT FOR USE IN DIAGNOSTIC OR THERAPEUTIC PROCEDURES'.