

VCL antibody - C-terminal region

Rabbit Polyclonal Antibody

Catalog # AI14611

Product Information

Application	WB
Primary Accession	P18206
Other Accession	NM_003373 , NP_003364
Reactivity	Human, Mouse, Rat, Rabbit, Zebrafish, Dog, Guinea Pig, Horse, Bovine
Predicted	Human, Rabbit, Zebrafish, Chicken, Dog, Guinea Pig, Horse, Bovine
Host	Rabbit
Clonality	Polyclonal
Calculated MW	123799

Additional Information

Gene ID	7414
Alias Symbol	CMD1W, CMH15, MVCL
Other Names	Vinculin, Metavinculin, MV, VCL
Format	Liquid. Purified antibody supplied in 1x PBS buffer with 0.09% (w/v) sodium azide and 2% sucrose.
Reconstitution & Storage	Add 50 ul of distilled water. Final anti-VCL antibody concentration is 1 mg/ml in PBS buffer with 2% sucrose. For longer periods of storage, store at 20°C. Avoid repeat freeze-thaw cycles.
Precautions	VCL antibody - C-terminal region is for research use only and not for use in diagnostic or therapeutic procedures.

Protein Information

Name	VCL
Function	Actin filament (F-actin)-binding protein involved in cell- matrix adhesion and cell-cell adhesion. Regulates cell-surface E- cadherin expression and potentiates mechanosensing by the E-cadherin complex. May also play important roles in cell morphology and locomotion.
Cellular Location	Cell membrane {ECO:0000250 UniProtKB:P12003}; Peripheral membrane protein {ECO:0000250 UniProtKB:P12003}; Cytoplasmic side {ECO:0000250 UniProtKB:P12003}. Cell junction, adherens junction {ECO:0000250 UniProtKB:P12003}. Cell junction, focal adhesion {ECO:0000250 UniProtKB:P12003}. Cytoplasm, cytoskeleton {ECO:0000250 UniProtKB:P85972}. Cell membrane, sarcolemma

{ECO:0000250|UniProtKB:Q64727}; Peripheral membrane protein
{ECO:0000250|UniProtKB:Q64727}; Cytoplasmic side
{ECO:0000250|UniProtKB:Q64727}. Cell projection, podosome
{ECO:0000250|UniProtKB:Q64727}. Note=Recruitment to cell-cell junctions occurs in a myosin II-dependent manner. Interaction with CTNNB1 is necessary for its localization to the cell-cell junctions
{ECO:0000250|UniProtKB:P12003}

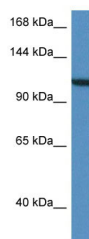
Tissue Location

Metavinculin is muscle-specific.

References

Weller P.A.,et al.Proc. Natl. Acad. Sci. U.S.A. 87:5667-5671(1990).
Bechtel S.,et al.BMC Genomics 8:399-399(2007).
Deloukas P.,et al.Nature 429:375-381(2004).
Moiseyeva E.P.,et al.J. Biol. Chem. 268:4318-4325(1993).
Lubec G.,et al.Submitted (DEC-2008) to UniProtKB.

Images



WB Suggested Anti-VCL Antibody Titration: 1.0 µg/ml
Positive Control: HepG2 Whole Cell

Please note: All products are 'FOR RESEARCH USE ONLY. NOT FOR USE IN DIAGNOSTIC OR THERAPEUTIC PROCEDURES'.