

CDA antibody - C-terminal region

Rabbit Polyclonal Antibody

Catalog # AI14615

Product Information

Application	WB
Primary Accession	P32320
Other Accession	NM_001785 , NP_001776
Reactivity	Human, Mouse, Rat, Zebrafish, Guinea Pig, Horse, Bovine, Yeast
Predicted	Mouse, Rat, Pig, Bovine
Host	Rabbit
Clonality	Polyclonal
Calculated MW	16185

Additional Information

Gene ID	978
Alias Symbol	CDD
Other Names	Cytidine deaminase, 3.5.4.5, Cytidine aminohydrolase, CDA, CDD
Format	Liquid. Purified antibody supplied in 1x PBS buffer with 0.09% (w/v) sodium azide and 2% sucrose.
Reconstitution & Storage	Add 50 ul of distilled water. Final anti-CDA antibody concentration is 1 mg/ml in PBS buffer with 2% sucrose. For longer periods of storage, store at 20°C. Avoid repeat freeze-thaw cycles.
Precautions	CDA antibody - C-terminal region is for research use only and not for use in diagnostic or therapeutic procedures.

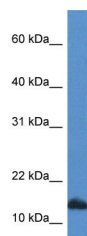
Protein Information

Name	CDA (HGNC:1712)
Synonyms	CDD
Function	This enzyme scavenges exogenous and endogenous cytidine and 2'-deoxycytidine for UMP synthesis.
Tissue Location	Highly expressed in granulocytes while expression is very low in fibroblasts, chondrocytes, monocytes, and T- as well as B-cell lines

References

Laliberte J.,et al.Cancer Res. 54:5401-5407(1994).
Demontis S.,et al.Biochim. Biophys. Acta 1443:323-333(1998).
Gran C.,et al.Blood 91:4127-4135(1998).
Gregory S.G.,et al.Nature 441:315-321(2006).
Kuhn K.,et al.Biochem. Biophys. Res. Commun. 190:1-7(1993).

Images



WB Suggested Anti-CDA Antibody Titration: 1.0 µg/ml
Positive Control: HepG2 Whole Cell

Please note: All products are 'FOR RESEARCH USE ONLY. NOT FOR USE IN DIAGNOSTIC OR THERAPEUTIC PROCEDURES'.