

VASP antibody - C-terminal region

Rabbit Polyclonal Antibody

Catalog # AI14633

Product Information

Application	WB
Primary Accession	P50552
Other Accession	NM_003370 , NP_003361
Reactivity	Human, Mouse, Rat, Dog, Guinea Pig, Horse, Bovine
Predicted	Human, Mouse, Rat, Dog, Guinea Pig, Horse, Bovine
Host	Rabbit
Clonality	Polyclonal
Calculated MW	39830

Additional Information

Gene ID	7408
Other Names	Vasodilator-stimulated phosphoprotein, VASP, VASP
Format	Liquid. Purified antibody supplied in 1x PBS buffer with 0.09% (w/v) sodium azide and 2% sucrose.
Reconstitution & Storage	Add 50 ul of distilled water. Final anti-VASP antibody concentration is 1 mg/ml in PBS buffer with 2% sucrose. For longer periods of storage, store at 20°C. Avoid repeat freeze-thaw cycles.
Precautions	VASP antibody - C-terminal region is for research use only and not for use in diagnostic or therapeutic procedures.

Protein Information

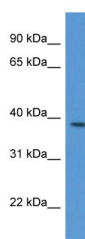
Name	VASP
Function	Ena/VASP proteins are actin-associated proteins involved in a range of processes dependent on cytoskeleton remodeling and cell polarity such as axon guidance, lamellipodial and filopodial dynamics, platelet activation and cell migration. VASP promotes actin filament elongation. It protects the barbed end of growing actin filaments against capping and increases the rate of actin polymerization in the presence of capping protein. VASP stimulates actin filament elongation by promoting the transfer of profilin-bound actin monomers onto the barbed end of growing actin filaments. Plays a role in actin-based mobility of <i>Listeria monocytogenes</i> in host cells. Regulates actin dynamics in platelets and plays an important role in regulating platelet aggregation.

Cellular Location	Cytoplasm. Cytoplasm, cytoskeleton. Cell junction, focal adhesion. Cell junction, tight junction Cell projection, lamellipodium membrane. Cell projection, filopodium membrane. Note=Targeted to stress fibers and focal adhesions through interaction with a number of proteins including MRL family members Localizes to the plasma membrane in protruding lamellipodia and filopodial tips. Stimulation by thrombin or PMA, also translocates VASP to focal adhesions. Localized along the sides of actin filaments throughout the peripheral cytoplasm under basal conditions. In pre- apoptotic cells, colocalizes with MEFV in large specks (pyroptosomes)
Tissue Location	Highly expressed in platelets.

References

Haffner C.,et al.EMBO J. 14:19-27(1995).
Laurent V.,et al.J. Cell Biol. 144:1245-1258(1999).
Ota T.,et al.Nat. Genet. 36:40-45(2004).
Mural R.J.,et al.Submitted (JUL-2005) to the EMBL/GenBank/DDBJ databases.
Gevaert K.,et al.Nat. Biotechnol. 21:566-569(2003).

Images



WB Suggested Anti-VASP Antibody Titration: 1.0 µg/ml
Positive Control: Jurkat Whole Cell

Please note: All products are 'FOR RESEARCH USE ONLY. NOT FOR USE IN DIAGNOSTIC OR THERAPEUTIC PROCEDURES'.