

# PGM5 antibody - N-terminal region

Rabbit Polyclonal Antibody

Catalog # AI14638

## Product Information

---

<b>Application</b>	WB
<b>Primary Accession</b>	<a href="#">Q15124</a>
<b>Other Accession</b>	<a href="#">NM_021965</a> , <a href="#">NP_068800</a>
<b>Reactivity</b>	Human, Mouse, Rat, Rabbit, Guinea Pig, Bovine
<b>Predicted</b>	Human, Mouse, Rat, Rabbit, Chicken, Guinea Pig, Bovine
<b>Host</b>	Rabbit
<b>Clonality</b>	Polyclonal
<b>Calculated MW</b>	62225

## Additional Information

---

<b>Gene ID</b>	5239
<b>Alias Symbol</b>	PGMRP
<b>Other Names</b>	Phosphoglucomutase-like protein 5, Aciculin, Phosphoglucomutase-related protein, PGM-RP, PGM5, PGMRP
<b>Format</b>	Liquid. Purified antibody supplied in 1x PBS buffer with 0.09% (w/v) sodium azide and 2% sucrose.
<b>Reconstitution &amp; Storage</b>	Add 50 ul of distilled water. Final anti-PGM5 antibody concentration is 1 mg/ml in PBS buffer with 2% sucrose. For longer periods of storage, store at 20°C. Avoid repeat freeze-thaw cycles.
<b>Precautions</b>	PGM5 antibody - N-terminal region is for research use only and not for use in diagnostic or therapeutic procedures.

## Protein Information

---

<b>Name</b>	PGM5 ( <a href="#">HGNC:8908</a> )
<b>Synonyms</b>	PGMRP
<b>Function</b>	Component of adherens-type cell-cell and cell-matrix junctions (PubMed: <a href="#">8175905</a> ). Has no phosphoglucomutase activity in vitro (PubMed: <a href="#">8175905</a> ).
<b>Cellular Location</b>	Cell junction, adherens junction. Cytoplasm, cytoskeleton. Cell membrane, sarcolemma {ECO:0000250 UniProtKB:Q8BZF8}. Note=Concentrated in focal contacts at the ends of actin bundles, and associated with actin filaments

## Tissue Location

Detected in smooth and cardiac muscle at high levels and in skeletal muscle at low level. Present in other tissues due to vascular or other smooth muscle component. Low levels are present in liver, kidney, skin and brain (at protein level)

## References

---

Ota T.,et al.Nat. Genet. 36:40-45(2004).

Humphray S.J.,et al.Nature 429:369-374(2004).

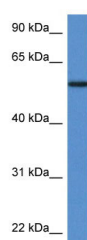
Moiseeva E.P.,et al.Eur. J. Biochem. 248:634-643(1997).

Parker K.,et al.Submitted (JUN-2007) to UniProtKB.

Moiseeva E.P.,et al.Eur. J. Biochem. 235:103-113(1996).

## Images

---



WB Suggested Anti-PGM5 Antibody Titration: 1.0 µg/ml  
Positive Control: Fetal Heart

Please note: All products are 'FOR RESEARCH USE ONLY. NOT FOR USE IN DIAGNOSTIC OR THERAPEUTIC PROCEDURES'.