

MPI Antibody - C-terminal region

Rabbit Polyclonal Antibody

Catalog # AI14643

Product Information

Application	WB
Primary Accession	P34949
Other Accession	NP_002426
Reactivity	Human
Host	Rabbit
Clonality	Polyclonal
Calculated MW	46656

Additional Information

Gene ID	4351
Alias Symbol Other Names	MPI, PMI1, Mannose-6-phosphate isomerase, 5.3.1.8, Phosphohexomutase, Phosphomannose isomerase, PMI, MPI, PMI1
Format	Liquid. Purified antibody supplied in 1x PBS buffer with 0.09% (w/v) sodium azide and 2% sucrose.
Reconstitution & Storage	Add 50 μ l of distilled water. Final Anti-MPI antibody concentration is 1 mg/ml in PBS buffer with 2% sucrose. For longer periods of storage, store at -20°C. Avoid repeat freeze-thaw cycles.
Precautions	MPI Antibody - C-terminal region is for research use only and not for use in diagnostic or therapeutic procedures.

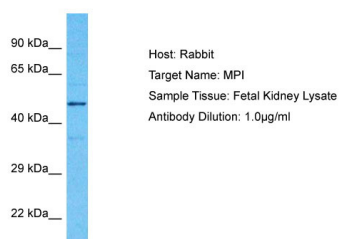
Protein Information

Name	MPI (HGNC:7216)
Synonyms	PMI1
Function	Isomerase that catalyzes the interconversion of fructose-6-P and mannose-6-P and has a critical role in the supply of D-mannose derivatives required for many eukaryotic glycosylation reactions.
Cellular Location	Cytoplasm {ECO:0000250 UniProtKB:Q924M7}.
Tissue Location	Expressed in all tissues, but more abundant in heart, brain and skeletal muscle.

References

Proudfoot A.E.I.,et al.Eur. J. Biochem. 219:415-423(1994).
Schollen E.,et al.Hum. Mutat. 16:247-252(2000).
Ota T.,et al.Nat. Genet. 36:40-45(2004).
Mural R.J.,et al.Submitted (SEP-2005) to the EMBL/GenBank/DDBJ databases.
Gauci S.,et al.Anal. Chem. 81:4493-4501(2009).

Images



Host: Rabbit
Target Name: MPI
Sample Tissue: Fetal Kidney lysates
Antibody Dilution: 1.0µg/ml

Please note: All products are 'FOR RESEARCH USE ONLY. NOT FOR USE IN DIAGNOSTIC OR THERAPEUTIC PROCEDURES'.