

CAMK2B antibody - middle region

Rabbit Polyclonal Antibody

Catalog # AI14645

Product Information

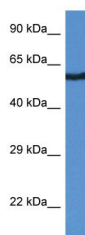
Application	WB
Primary Accession	A4D2K5
Other Accession	NM_172080 , NP_742077
Reactivity	Human, Mouse, Rat, Rabbit, Zebrafish, Pig, Guinea Pig, Horse, Bovine
Predicted	Human, Mouse, Rat, Zebrafish, Pig, Chicken, Guinea Pig, Horse
Host	Rabbit
Clonality	Polyclonal
Calculated MW	57 KDa

Additional Information

Alias Symbol	CAM2, CAMK2, CAMKB, MGC29528
Format	Liquid. Purified antibody supplied in 1x PBS buffer with 0.09% (w/v) sodium azide and 2% sucrose.
Reconstitution & Storage	Add 50 ul of distilled water. Final anti-CAMK2B antibody concentration is 1 mg/ml in PBS buffer with 2% sucrose. For longer periods of storage, store at 20°C. Avoid repeat freeze-thaw cycles.
Precautions	CAMK2B antibody - middle region is for research use only and not for use in diagnostic or therapeutic procedures.

Protein Information

Images



WB Suggested Anti-CAMK2B Antibody Titration: 1.0 µg/ml
Positive Control: THP-1 Whole Cell