

Phb antibody - C-terminal region

Rabbit Polyclonal Antibody

Catalog # AI14648

Product Information

Application	WB
Primary Accession	P67778
Other Accession	NM_008831 , NP_032857
Reactivity	Human, Mouse, Rat, Rabbit, Zebrafish, Pig, Goat, Dog, Guinea Pig, Horse, Bovine, Yeast
Predicted Host	Human, Mouse, Rat, Zebrafish, Chicken, Dog, Bovine
Clonality	Rabbit
Calculated MW	Polyclonal 29820

Additional Information

Gene ID	18673
Alias Symbol	BAP32, Bap32
Other Names	Prohibitin, B-cell receptor-associated protein 32, BAP 32, Phb
Format	Liquid. Purified antibody supplied in 1x PBS buffer with 0.09% (w/v) sodium azide and 2% sucrose.
Reconstitution & Storage	Add 50 ul of distilled water. Final anti-Phb antibody concentration is 1 mg/ml in PBS buffer with 2% sucrose. For longer periods of storage, store at 20°C. Avoid repeat freeze-thaw cycles.
Precautions	Phb antibody - C-terminal region is for research use only and not for use in diagnostic or therapeutic procedures.

Protein Information

Name	Phb1
Synonyms	Phb {ECO:0000312 MGI:MGI:97572}
Function	Protein with pleiotropic attributes mediated in a cell- compartment- and tissue-specific manner, which include the plasma membrane-associated cell signaling functions, mitochondrial chaperone, and transcriptional co-regulator of transcription factors in the nucleus (PubMed: 11302691 , PubMed: 20959514 , PubMed: 23241883 , PubMed: 24856930 , PubMed: 29324904). Plays a role in adipose tissue and glucose homeostasis in a sex-specific manner (PubMed: 24947361). Contributes to pulmonary vascular remodeling by accelerating proliferation of pulmonary arterial

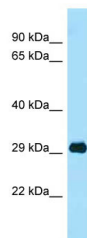
smooth muscle cells (By similarity).

Cellular Location	Mitochondrion inner membrane. Nucleus Cell membrane. Cytoplasm
Tissue Location	Widely expressed in different tissues.

References

Terashima M.,et al.EMBO J. 13:3782-3792(1994).
Carninci P.,et al.Science 309:1559-1563(2005).
Church D.M.,et al.PLoS Biol. 7:E1000112-E1000112(2009).
Lubec G.,et al.Submitted (MAR-2007) to UniProtKB.
Coates P.J.,et al.Exp. Cell Res. 265:262-273(2001).

Images



Phb antibody - C-terminal region (AI14648) validated by WB using Mouse Thymus at 1.0µg/ml.

Please note: All products are 'FOR RESEARCH USE ONLY. NOT FOR USE IN DIAGNOSTIC OR THERAPEUTIC PROCEDURES'.