

IL16 Antibody - C-terminal region

Rabbit Polyclonal Antibody

Catalog # AI14649

Product Information

Application	WB
Primary Accession	Q14005
Other Accession	NM_004513 , NP_004504
Reactivity	Human, Pig, Goat, Horse
Predicted	Human, Pig, Goat, Horse
Host	Rabbit
Clonality	Polyclonal
Calculated MW	141752

Additional Information

Gene ID	3603
Alias Symbol Other Names	FLJ16806, FLJ42735, FLJ44234, LCF, NIL16, PRIL16, prIL-16 Pro-interleukin-16, Interleukin-16, IL-16, Lymphocyte chemoattractant factor, LCF, IL16
Format	Liquid. Purified antibody supplied in 1x PBS buffer with 0.09% (w/v) sodium azide and 2% sucrose.
Reconstitution & Storage	Add 50 ul of distilled water. Final anti-IL16 antibody concentration is 1 mg/ml in PBS buffer with 2% sucrose. For longer periods of storage, store at 20°C. Avoid repeat freeze-thaw cycles.
Precautions	IL16 Antibody - C-terminal region is for research use only and not for use in diagnostic or therapeutic procedures.

Protein Information

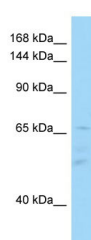
Name	IL16
Function	Interleukin-16 stimulates a migratory response in CD4+ lymphocytes, monocytes, and eosinophils. Primes CD4+ T-cells for IL-2 and IL-15 responsiveness. Also induces T-lymphocyte expression of interleukin 2 receptor. Ligand for CD4. Isoform 3 is involved in cell cycle progression in T-cells. Appears to be involved in transcriptional regulation of SKP2 and is probably part of a transcriptional repression complex on the core promoter of the SKP2 gene. May act as a scaffold for GABPB1 (the DNA-binding subunit of the GABP transcription factor complex) and HDAC3 thus maintaining transcriptional repression and blocking cell cycle progression in resting T-cells.

Cellular Location	[Interleukin-16]: Secreted. [Isoform 3]: Cytoplasm. Nucleus.
Tissue Location	[Isoform 3]: Expressed in hemopoietic tissues, such as resting T-cells, but undetectable during active T-cell proliferation

References

Bannert N.,et al.J. Biol. Chem. 278:42190-42199(2003).
Wang P.,et al.BMC Genomics 10:518-518(2009).
Kornfeld H.,et al.Submitted (JAN-1999) to the EMBL/GenBank/DDBJ databases.
Ota T.,et al.Nat. Genet. 36:40-45(2004).
Zody M.C.,et al.Nature 440:671-675(2006).

Images



WB Suggested Anti-IL16 Antibody Titration: 1.0 µg/ml
Positive Control: Fetal Spleen

Please note: All products are 'FOR RESEARCH USE ONLY. NOT FOR USE IN DIAGNOSTIC OR THERAPEUTIC PROCEDURES'.