

PVRL1 antibody - N-terminal region

Rabbit Polyclonal Antibody

Catalog # AI14654

Product Information

Application	WB
Primary Accession	Q15223
Other Accession	NM_002855 , NP_002846
Reactivity	Human, Mouse, Rat, Rabbit, Dog, Guinea Pig, Horse, Bovine
Predicted	Human, Mouse, Rat, Pig, Dog, Guinea Pig, Bovine
Host	Rabbit
Clonality	Polyclonal
Calculated MW	57158

Additional Information

Gene ID	5818
Alias Symbol	CD111, CLPED1, ED4, HIGR, HVEC, MGC142031, MGC16207, OFC7, PRR, PRR1, PVRR, PVRR1, SK-12, nectin-1
Other Names	Nectin-1, Herpes virus entry mediator C, Herpesvirus entry mediator C, HveC, Herpesvirus Ig-like receptor, HIGR, Poliovirus receptor-related protein 1, CD111, PVRL1, HVEC, PRR1
Format	Liquid. Purified antibody supplied in 1x PBS buffer with 0.09% (w/v) sodium azide and 2% sucrose.
Reconstitution & Storage	Add 50 ul of distilled water. Final anti-PVRL1 antibody concentration is 1 mg/ml in PBS buffer with 2% sucrose. For longer periods of storage, store at 20°C. Avoid repeat freeze-thaw cycles.
Precautions	PVRL1 antibody - N-terminal region is for research use only and not for use in diagnostic or therapeutic procedures.

Protein Information

Name	NECTIN1 {ECO:0000303 PubMed:11356977, ECO:0000312 HGNC:HGNC:9706}
Function	Cell adhesion molecule that promotes cell-cell contacts and plays important roles in the development of the nervous system (PubMed: 21325282). Acts by forming homophilic or heterophilic trans- dimers (PubMed: 21325282). Heterophilic interactions have been detected between NECTIN1 and NECTIN3 and between NECTIN1 and NECTIN4 (By similarity). Involved in axon guidance by promoting contacts between the commissural axons and the floor plate cells (By similarity). Involved in synaptogenesis (By similarity). Has some

neurite outgrowth- promoting activity (By similarity). Promotes formation of checkerboard- like cellular pattern of hair cells and supporting cells in the auditory epithelium via heterophilic interaction with NECTIN3: NECTIN1 is present in the membrane of hair cells and associates with NECTIN3 on supporting cells, thereby mediating heterotypic adhesion between these two cell types (By similarity). Required for enamel mineralization (By similarity).

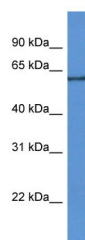
Cellular Location

Cell membrane; Single-pass type I membrane protein. Cell junction, adherens junction. Presynaptic cell membrane {ECO:0000250|UniProtKB:Q9JKF6}; Single-pass type I membrane protein Note=In the auditory epithelium, specificaly localizes to the apical side of the lateral membranes of hair cells {ECO:0000250|UniProtKB:Q9JKF6} [Isoform Delta]: Cell membrane; Single-pass type I membrane protein

References

Lopez M.,et al.Gene 155:261-265(1995).
Geraghty R.J.,et al.Science 280:1618-1620(1998).
Lopez M.,et al.J. Virol. 75:5684-5691(2001).
Suzuki K.,et al.Nat. Genet. 25:427-430(2000).
Krummenacher C.,et al.J. Virol. 72:7064-7074(1998).

Images



WB Suggested Anti-PVRL1 Antibody Titration: 1.0 µg/ml
Positive Control: MCF7 Whole Cell

Please note: All products are 'FOR RESEARCH USE ONLY. NOT FOR USE IN DIAGNOSTIC OR THERAPEUTIC PROCEDURES'.