

TK2 antibody - C-terminal region

Rabbit Polyclonal Antibody

Catalog # AI14671

Product Information

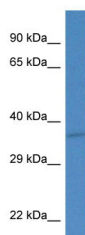
Application	WB
Primary Accession	Q8IZR3
Other Accession	NM_004614 , NP_004605
Reactivity	Human, Mouse, Rat, Rabbit, Dog, Guinea Pig, Horse, Bovine
Predicted	Human, Mouse, Rat, Rabbit, Dog, Guinea Pig, Horse, Bovine
Host	Rabbit
Clonality	Polyclonal
Calculated MW	34 KDa

Additional Information

Alias Symbol	MTTK, MTDPS2
Format	Liquid. Purified antibody supplied in 1x PBS buffer with 0.09% (w/v) sodium azide and 2% sucrose.
Reconstitution & Storage	Add 50 ul of distilled water. Final anti-TK2 antibody concentration is 1 mg/ml in PBS buffer with 2% sucrose. For longer periods of storage, store at 20°C. Avoid repeat freeze-thaw cycles.
Precautions	TK2 antibody - C-terminal region is for research use only and not for use in diagnostic or therapeutic procedures.

Protein Information

Images



WB Suggested Anti-TK2 Antibody Titration: 1.0 µg/ml
Positive Control: Fetal Heart