

Cks1b antibody - N-terminal region

Rabbit Polyclonal Antibody

Catalog # AI14675

Product Information

Application	WB
Primary Accession	P61025
Other Accession	NM_016904 , NP_058600
Reactivity	Human, Mouse, Rat, Rabbit, Zebrafish, Goat, Dog, Guinea Pig, Horse, Bovine, Yeast
Predicted Host	Human, Mouse, Rat, Rabbit, Pig, Dog, Guinea Pig
Clonality	Rabbit
Calculated MW	Polyclonal 9660

Additional Information

Gene ID	54124
Alias Symbol Other Names	2410005G18Rik, 2610005D03Rik, AA407784, Cks1, sid1334 Cyclin-dependent kinases regulatory subunit 1, CKS-1, Sid 1334, Cks1b, Cks1, Sid1334
Format	Liquid. Purified antibody supplied in 1x PBS buffer with 0.09% (w/v) sodium azide and 2% sucrose.
Reconstitution & Storage	Add 50 ul of distilled water. Final anti-Cks1b antibody concentration is 1 mg/ml in PBS buffer with 2% sucrose. For longer periods of storage, store at 20°C. Avoid repeat freeze-thaw cycles.
Precautions	Cks1b antibody - N-terminal region is for research use only and not for use in diagnostic or therapeutic procedures.

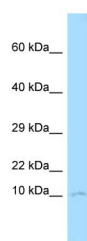
Protein Information

Name	Cks1b
Synonyms	Cks1, Sid1334
Function	Binds to the catalytic subunit of the cyclin dependent kinases and is essential for their biological function.

References

Seki N.,et al.Submitted (MAR-1999) to the EMBL/GenBank/DDBJ databases.
Carninci P.,et al.Science 309:1559-1563(2005).

Images



WB Suggested Anti-Cks1b Antibody Titration: 1.0 µg/ml
Positive Control: Mouse Thymus

Please note: All products are 'FOR RESEARCH USE ONLY. NOT FOR USE IN DIAGNOSTIC OR THERAPEUTIC PROCEDURES'.