

SEMA4D antibody - N-terminal region

Rabbit Polyclonal Antibody

Catalog # AI14684

Product Information

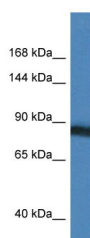
Application	WB
Primary Accession	Q92854-2
Other Accession	NM_001142287 , NP_001135759
Reactivity	Human, Mouse, Rat, Rabbit, Pig, Dog, Guinea Pig, Horse, Bovine
Predicted	Human, Mouse, Rat, Rabbit, Pig, Dog, Guinea Pig, Horse, Bovine
Host	Rabbit
Clonality	Polyclonal
Calculated MW	81 kDa

Additional Information

Alias Symbol	C9orf164, CD100, FLJ33485, FLJ34282, FLJ39737, FLJ46484, M-sema-G, MGC169138, MGC169141, SEMAJ, coll-4
Format	Liquid. Purified antibody supplied in 1x PBS buffer with 0.09% (w/v) sodium azide and 2% sucrose.
Reconstitution & Storage	Add 50 ul of distilled water. Final anti-SEMA4D antibody concentration is 1 mg/ml in PBS buffer with 2% sucrose. For longer periods of storage, store at 20°C. Avoid repeat freeze-thaw cycles.
Precautions	SEMA4D antibody - N-terminal region is for research use only and not for use in diagnostic or therapeutic procedures.

Protein Information

Images



WB Suggested Anti-SEMA4D Antibody Titration: 1.0 µg/ml
Positive Control: Hela Whole Cell