

MTNR1A antibody - C-terminal region

Rabbit Polyclonal Antibody

Catalog # AI14685

Product Information

| | |
|--------------------------|--|
| Application | WB |
| Primary Accession | P48039 |
| Other Accession | NM_005958 , NP_005949 |
| Reactivity | Human, Rabbit, Goat, Dog, Guinea Pig, Horse, Bovine, Sheep |
| Predicted | Human, Bovine, Sheep |
| Host | Rabbit |
| Clonality | Polyclonal |
| Calculated MW | 39375 |

Additional Information

| | |
|-------------------------------------|---|
| Gene ID | 4543 |
| Alias Symbol | MEL-1A-R, MT1 |
| Other Names | Melatonin receptor type 1A, Mel-1A-R, Mel1a receptor, MTNR1A |
| Format | Liquid. Purified antibody supplied in 1x PBS buffer with 0.09% (w/v) sodium azide and 2% sucrose. |
| Reconstitution & Storage | Add 50 ul of distilled water. Final anti-MTNR1A antibody concentration is 1 mg/ml in PBS buffer with 2% sucrose. For longer periods of storage, store at 20°C. Avoid repeat freeze-thaw cycles. |
| Precautions | MTNR1A antibody - C-terminal region is for research use only and not for use in diagnostic or therapeutic procedures. |

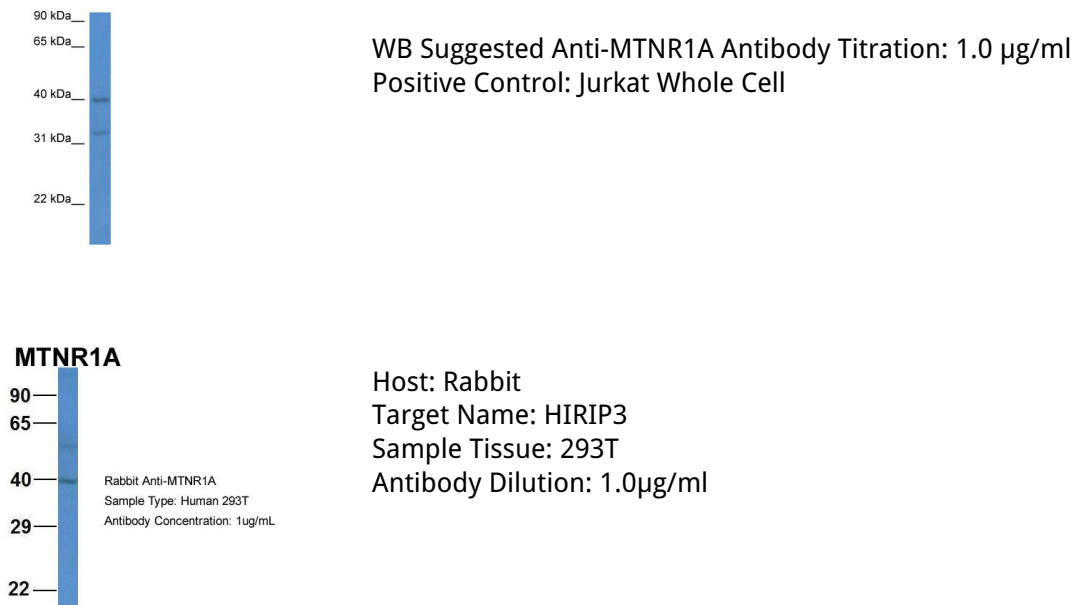
Protein Information

| | |
|--------------------------|---|
| Name | MTNR1A |
| Function | High affinity receptor for melatonin. Likely to mediate the reproductive and circadian actions of melatonin. The activity of this receptor is mediated by pertussis toxin sensitive G proteins that inhibit adenylate cyclase activity. Possibly involved in sleep induction, by melatonin activation of the potassium channel KCNMA1/BK and the dissociation of G-beta and G-gamma subunits, thereby decreasing synaptic transmission (By similarity). |
| Cellular Location | Cell membrane; Multi-pass membrane protein. |
| Tissue Location | Expressed in hypophyseal pars tuberalis and hypothalamic suprachiasmatic nuclei (SCN). Hippocampus |

References

Reppert S.M.,et al.Neuron 13:1177-1185(1994).
Ebisawa T.,et al.Biochem. Biophys. Res. Commun. 262:832-837(1999).
Huang Y.-H.,et al.Submitted (DEC-2007) to the EMBL/GenBank/DDBJ databases.

Images



Please note: All products are 'FOR RESEARCH USE ONLY. NOT FOR USE IN DIAGNOSTIC OR THERAPEUTIC PROCEDURES'.