

# LPIN2 antibody - C-terminal region

Rabbit Polyclonal Antibody

Catalog # AI14692

## Product Information

---

<b>Application</b>	WB
<b>Primary Accession</b>	<a href="#">Q92539</a>
<b>Other Accession</b>	<a href="#">NM_014646</a> , <a href="#">NP_055461</a>
<b>Reactivity</b>	Human, Mouse, Rat, Rabbit, Zebrafish, Pig, Dog, Guinea Pig, Horse, Bovine
<b>Predicted</b>	Human, Mouse, Rat, Rabbit, Pig, Chicken, Dog, Guinea Pig, Horse, Bovine
<b>Host</b>	Rabbit
<b>Clonality</b>	Polyclonal
<b>Calculated MW</b>	99399

## Additional Information

---

<b>Gene ID</b>	9663
<b>Alias Symbol</b>	KIAA0249
<b>Other Names</b>	Phosphatidate phosphatase LPIN2, 3.1.3.4, Lipin-2, LPIN2, KIAA0249
<b>Format</b>	Liquid. Purified antibody supplied in 1x PBS buffer with 0.09% (w/v) sodium azide and 2% sucrose.
<b>Reconstitution &amp; Storage</b>	Add 50 ul of distilled water. Final anti-LPIN2 antibody concentration is 1 mg/ml in PBS buffer with 2% sucrose. For longer periods of storage, store at 20°C. Avoid repeat freeze-thaw cycles.
<b>Precautions</b>	LPIN2 antibody - C-terminal region is for research use only and not for use in diagnostic or therapeutic procedures.

## Protein Information

---

<b>Name</b>	LPIN2 ( <a href="#">HGNC:14450</a> )
<b>Synonyms</b>	KIAA0249
<b>Function</b>	Acts as a magnesium-dependent phosphatidate phosphatase enzyme which catalyzes the conversion of phosphatidic acid to diacylglycerol during triglyceride, phosphatidylcholine and phosphatidylethanolamine biosynthesis in the endoplasmic reticulum membrane. Plays important roles in controlling the metabolism of fatty acids at different levels. Also acts as a nuclear transcriptional coactivator for PPARGC1A to modulate lipid metabolism.
<b>Cellular Location</b>	Nucleus. Cytoplasm, cytosol. Endoplasmic reticulum membrane Note=Translocates to endoplasmic reticulum membrane with increasing

levels of oleate.

## Tissue Location

Expressed in liver, lung, kidney, placenta, spleen, thymus, lymph node, prostate, testes, small intestine, and colon

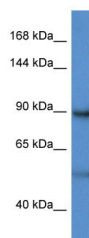
## References

---

Nagase T.,et al.DNA Res. 3:321-329(1996).  
Mural R.J.,et al.Submitted (SEP-2005) to the EMBL/GenBank/DDBJ databases.  
Olsen J.V.,et al.Cell 127:635-648(2006).  
Donkor J.,et al.J. Biol. Chem. 282:3450-3457(2007).  
Zahedi R.P.,et al.J. Proteome Res. 7:526-534(2008).

## Images

---



WB Suggested Anti-LPIN2 Antibody Titration: 1.0 µg/ml  
Positive Control: Hela Whole Cell

Please note: All products are 'FOR RESEARCH USE ONLY. NOT FOR USE IN DIAGNOSTIC OR THERAPEUTIC PROCEDURES'.