

# ARHGDIB Antibody - N-terminal region

Rabbit Polyclonal Antibody

Catalog # AI14705

## Product Information

<b>Application</b>	WB
<b>Primary Accession</b>	<a href="#">P52566</a>
<b>Other Accession</b>	<a href="#">NM_001175</a> , <a href="#">NP_001166</a>
<b>Reactivity</b>	Human, Mouse, Rat, Rabbit, Zebrafish, Pig, Dog, Guinea Pig, Horse, Bovine
<b>Predicted</b>	Human, Mouse, Rat, Rabbit, Zebrafish, Pig, Dog, Guinea Pig, Horse, Bovine
<b>Host</b>	Rabbit
<b>Clonality</b>	Polyclonal
<b>Calculated MW</b>	22988

## Additional Information

<b>Gene ID</b>	397
<b>Alias Symbol</b>	D4, GDIA2, GDID4, LYGDI, Ly-GDI, RAP1GN1, RhoGDI2
<b>Other Names</b>	Rho GDP-dissociation inhibitor 2, Rho GDI 2, Ly-GDI, Rho-GDI beta, ARHGDIB, GDIA2, GDID4, RAP1GN1
<b>Format</b>	Liquid. Purified antibody supplied in 1x PBS buffer with 0.09% (w/v) sodium azide and 2% sucrose.
<b>Reconstitution &amp; Storage</b>	Add 50 ul of distilled water. Final anti-ARHGDIB antibody concentration is 1 mg/ml in PBS buffer with 2% sucrose. For longer periods of storage, store at 20°C. Avoid repeat freeze-thaw cycles.
<b>Precautions</b>	ARHGDIB Antibody - N-terminal region is for research use only and not for use in diagnostic or therapeutic procedures.

## Protein Information

<b>Name</b>	ARHGDIB
<b>Synonyms</b>	GDIA2, GDID4, RAP1GN1
<b>Function</b>	Regulates the GDP/GTP exchange reaction of the Rho proteins by inhibiting the dissociation of GDP from them, and the subsequent binding of GTP to them (PubMed: <a href="#">7512369</a> , PubMed: <a href="#">8356058</a> ). Regulates reorganization of the actin cytoskeleton mediated by Rho family members (PubMed: <a href="#">8262133</a> ).
<b>Cellular Location</b>	Cytoplasm, cytosol.
<b>Tissue Location</b>	Detected in bone marrow, thymus and spleen.

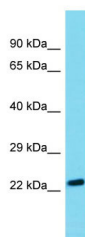
## References

---

Scherle P.,et al.Proc. Natl. Acad. Sci. U.S.A. 90:7568-7572(1993).  
Leffers H.,et al.Exp. Cell Res. 209:165-174(1993).  
Lelias J.M.,et al.Proc. Natl. Acad. Sci. U.S.A. 90:1479-1483(1993).  
Puhl H.L. III,et al.Submitted (APR-2002) to the EMBL/GenBank/DDBJ databases.  
Goshima N.,et al.Nat. Methods 5:1011-1017(2008).

## Images

---



Host: Rabbit  
Target Name: ARHGDIB  
Sample Tissue: 721\_B Whole cell lysate  
S  
Antibody Dilution: 1.0µg/mlARHGDIB is supported by  
BioGPS gene expression data to be expressed in 721\_B

Please note: All products are 'FOR RESEARCH USE ONLY. NOT FOR USE IN DIAGNOSTIC OR THERAPEUTIC PROCEDURES'.