

LIPH antibody - C-terminal region

Rabbit Polyclonal Antibody

Catalog # AI14707

Product Information

Application	WB
Primary Accession	Q8WWY8
Other Accession	NM_139248 , NP_640341
Reactivity	Human, Mouse, Rat, Rabbit, Pig, Dog, Guinea Pig, Horse, Bovine
Predicted	Human, Mouse, Rat, Rabbit, Pig, Dog, Guinea Pig, Horse, Bovine
Host	Rabbit
Clonality	Polyclonal
Calculated MW	50859

Additional Information

Gene ID	200879
Alias Symbol	AH, LPDLR, PLA1B, mPA-PLA1, LAH2, ARWH2
Other Names	Lipase member H, LIPH, 3.1.1.-, LPD lipase-related protein, Membrane-associated phosphatidic acid-selective phospholipase A1-alpha, mPA-PLA1 alpha, Phospholipase A1 member B, LIPH, LPDLR, MPAPLA1, PLA1B
Format	Liquid. Purified antibody supplied in 1x PBS buffer with 0.09% (w/v) sodium azide and 2% sucrose.
Reconstitution & Storage	Add 50 ul of distilled water. Final anti-LIPH antibody concentration is 1 mg/ml in PBS buffer with 2% sucrose. For longer periods of storage, store at 20°C. Avoid repeat freeze-thaw cycles.
Precautions	LIPH antibody - C-terminal region is for research use only and not for use in diagnostic or therapeutic procedures.

Protein Information

Name	LIPH
Synonyms	LPDLR, MPAPLA1, PLA1B
Function	Hydrolyzes specifically phosphatidic acid (PA) to produce 2- acyl lysophosphatidic acid (LPA; a potent bioactive lipid mediator) and fatty acid. Does not hydrolyze other phospholipids, like phosphatidylserine (PS), phosphatidylcholine (PC) and phosphatidylethanolamine (PE) or triacylglycerol (TG).
Cellular Location	Secreted. Cell membrane; Peripheral membrane protein

Tissue Location

Present in intestine (at protein level). Expressed in colon, prostate, kidney, pancreas, ovary, testis, intestine, lung and pancreas. Expressed at lower level in brain, spleen and heart. In the skin, it is prominently expressed in hair follicles, including the stem cell-rich bulge region and the inner root sheath (PubMed:17095700, PubMed:32336749).

References

Sonoda H.,et al.J. Biol. Chem. 277:34254-34263(2002).

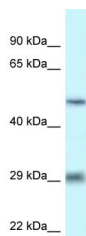
Jin W.,et al.Genomics 80:268-273(2002).

Kazantseva A.,et al.Science 314:982-985(2006).

Ota T.,et al.Nat. Genet. 36:40-45(2004).

Mural R.J.,et al.Submitted (SEP-2005) to the EMBL/GenBank/DDBJ databases.

Images



WB Suggested Anti-LIPH Antibody Titration: 1.0 µg/ml
Positive Control: THP-1 Whole Cell

Please note: All products are 'FOR RESEARCH USE ONLY. NOT FOR USE IN DIAGNOSTIC OR THERAPEUTIC PROCEDURES'.