

CPVL Antibody - C-terminal region

Rabbit Polyclonal Antibody

Catalog # AI14716

Product Information

Application	WB
Primary Accession	Q9H3G5
Other Accession	XP_005249843
Reactivity	Human
Predicted	Human, Rabbit, Horse, Bovine
Host	Rabbit
Clonality	Polyclonal
Calculated MW	54164

Additional Information

Gene ID	54504
Alias Symbol Other Names	CPVL, VLP, PSEC0124, UNQ197/PRO223, Probable serine carboxypeptidase CPVL, 3.4.16.-, Carboxypeptidase, vitellogenic-like, Vitellogenic carboxypeptidase-like protein, VCP-like protein, hVLP, CPVL, VLP
Format	Liquid. Purified antibody supplied in 1x PBS buffer with 0.09% (w/v) sodium azide and 2% sucrose.
Reconstitution & Storage	Add 50 μ l of distilled water. Final Anti-CPVL antibody concentration is 1 mg/ml in PBS buffer with 2% sucrose. For longer periods of storage, store at -20°C. Avoid repeat freeze-thaw cycles.
Precautions	CPVL Antibody - C-terminal region is for research use only and not for use in diagnostic or therapeutic procedures.

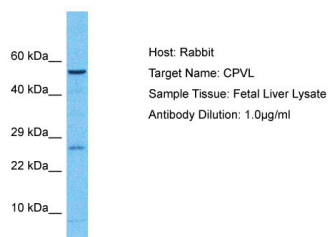
Protein Information

Name	CPVL
Synonyms	VLP
Function	May be involved in the digestion of phagocytosed particles in the lysosome, participation in an inflammatory protease cascade, and trimming of peptides for antigen presentation.
Tissue Location	Expressed in macrophages but not in other leukocytes. Abundantly expressed in heart and kidney. Also expressed in spleen, leukocytes, and placenta

References

Mahoney J.A.,et al.Genomics 72:243-251(2001).
Cho J.-J.,et al.Submitted (JUN-2000) to the EMBL/GenBank/DDBJ databases.
Clark H.F.,et al.Genome Res. 13:2265-2270(2003).
Otsuki T.,et al.DNA Res. 12:117-126(2005).
Scherer S.W.,et al.Science 300:767-772(2003).

Images



Host: Rabbit
Target Name: CPVL
Sample Tissue: Fetal Liver lysates
Antibody Dilution: 1µg/ml

Please note: All products are 'FOR RESEARCH USE ONLY. NOT FOR USE IN DIAGNOSTIC OR THERAPEUTIC PROCEDURES'.