

RARRES1 Antibody - middle region

Rabbit Polyclonal Antibody

Catalog # AI14717

Product Information

Application	WB
Primary Accession	P49788
Other Accession	NM_206963 , NP_996846
Reactivity	Human, Rat, Rabbit
Predicted	Human, Rat, Rabbit
Host	Rabbit
Clonality	Polyclonal
Calculated MW	33285

Additional Information

Gene ID	5918
Alias Symbol	TIG1
Other Names	Retinoic acid receptor responder protein 1, Phorbol ester-induced gene 1 protein, PERG-1, RAR-responsive protein TIG1, Tazarotene-induced gene 1 protein, RARRES1, PEIG1, TIG1
Format	Liquid. Purified antibody supplied in 1x PBS buffer with 0.09% (w/v) sodium azide and 2% sucrose.
Reconstitution & Storage	Add 50 ul of distilled water. Final anti-RARRES1 antibody concentration is 1 mg/ml in PBS buffer with 2% sucrose. For longer periods of storage, store at 20°C. Avoid repeat freeze-thaw cycles.
Precautions	RARRES1 Antibody - middle region is for research use only and not for use in diagnostic or therapeutic procedures.

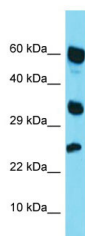
Protein Information

Name	RARRES1
Synonyms	PEIG1, TIG1
Function	Inhibitor of the cytoplasmic carboxypeptidase AGL2, may regulate the alpha-tubulin tyrosination cycle.
Cellular Location	Membrane; Single- pass type III membrane protein. Secreted
Tissue Location	Detected in urine (at protein level).

References

Nagpal S.,et al.J. Invest. Dermatol. 106:269-274(1996).
Cafferata E.G.,et al.Cell. Mol. Biol. 42:797-804(1996).
Sahab Z.J.,et al.Cancer Res. 71:1219-1228(2011).

Images



Host: Rabbit
Target Name: RARRES1
Sample Tissue: HepG2 Whole cell lysate
S
Antibody Dilution: 1.0µg/ml

Please note: All products are 'FOR RESEARCH USE ONLY. NOT FOR USE IN DIAGNOSTIC OR THERAPEUTIC PROCEDURES'.