

RPS9 antibody - N-terminal region

Rabbit Polyclonal Antibody

Catalog # AI14719

Product Information

Application	WB, IHC
Primary Accession	P46781
Other Accession	NM_001013 , NP_001004
Reactivity	Human, Mouse, Rat, Rabbit, Zebrafish, Dog, Guinea Pig, Horse, Bovine, Yeast
Predicted	Human, Mouse, Rabbit, Zebrafish, Dog, Horse
Host	Rabbit
Clonality	Polyclonal
Calculated MW	22591

Additional Information

Gene ID	6203
Alias Symbol	S9
Other Names	40S ribosomal protein S9, RPS9
Format	Liquid. Purified antibody supplied in 1x PBS buffer with 0.09% (w/v) sodium azide and 2% sucrose.
Reconstitution & Storage	Add 50 ul of distilled water. Final anti-RPS9 antibody concentration is 1 mg/ml in PBS buffer with 2% sucrose. For longer periods of storage, store at 20°C. Avoid repeat freeze-thaw cycles.
Precautions	RPS9 antibody - N-terminal region is for research use only and not for use in diagnostic or therapeutic procedures.

Protein Information

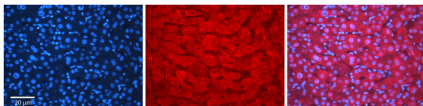
Name	RPS9 (HGNC:10442)
Function	Component of the small ribosomal subunit (PubMed: 23636399). The ribosome is a large ribonucleoprotein complex responsible for the synthesis of proteins in the cell (PubMed: 23636399). Part of the small subunit (SSU) processome, first precursor of the small eukaryotic ribosomal subunit. During the assembly of the SSU processome in the nucleolus, many ribosome biogenesis factors, an RNA chaperone and ribosomal proteins associate with the nascent pre-rRNA and work in concert to generate RNA folding, modifications, rearrangements and cleavage as well as targeted degradation of pre-ribosomal RNA by the RNA exosome (PubMed: 34516797).
Cellular Location	Cytoplasm. Nucleus, nucleolus. Note=Localized in cytoplasmic mRNP granules

containing untranslated mRNAs.

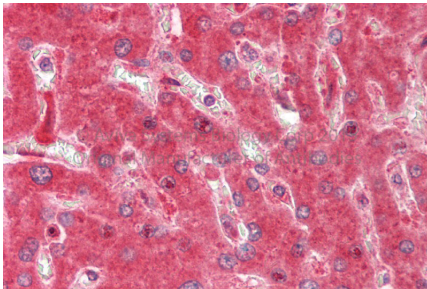
References

Frigerio J.-M.,et al.Biochim. Biophys. Acta 1262:64-68(1995).
Yoshihama M.,et al.Genome Res. 12:379-390(2002).
Grimwood J.,et al.Nature 428:529-535(2004).
Mural R.J.,et al.Submitted (JUL-2005) to the EMBL/GenBank/DDBJ databases.
Vladimirov S.N.,et al.Eur. J. Biochem. 239:144-149(1996).

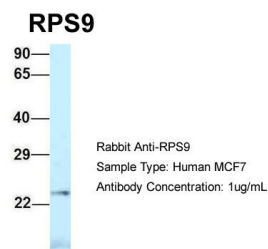
Images



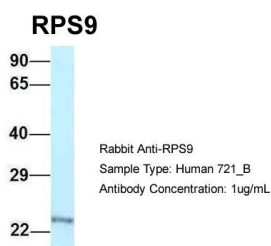
Rabbit Anti-RPS9 Antibody
Catalog Number: AI14719
Formalin Fixed Paraffin Embedded Tissue: Human Adult Liver
Observed Staining: Cytoplasm in hepatocytes, strong signal, very wide tissue distribution
Primary Antibody
Concentration: 1:100
Secondary Antibody: Donkey anti-Rabbit-Cy3
Secondary Antibody
Concentration: 1:200
Magnification: 20X
Exposure Time: 0.5 μ sec 2.0 sec
Protocol located in Reviews and Data.



Rabbit Anti-RPS9 antibody Catalog Number: ARP61782
Formalin Fixed Paraffin Embedded Tissue: Human Adult Liver
Observed Staining: Cytoplasm in hepatocytes
Primary Antibody Concentration: 1:600
Secondary Antibody: Donkey anti-Rabbit-Cy3
Secondary Antibody Concentration: 1:200
Magnification: 20X
Exposure Time: 0.5 μ sec 2.0 sec



Host:Rabbit
Target Name:RPS9
Sample Tissue:Human MCF7
Antibody Dilution: 1.0 μ g/mL
RPS9 is supported by BioGPS gene expression data to be expressed in MCF7



Host:Rabbit
Target Name:RPS9
Sample Tissue:Human 721_B
Antibody Dilution: 1.0 μ g/mL
RPS9 is strongly supported by BioGPS gene expression data to be expressed in Human 721_B cells

Please note: All products are 'FOR RESEARCH USE ONLY. NOT FOR USE IN DIAGNOSTIC OR THERAPEUTIC PROCEDURES'.