

RBMX Antibody - C-terminal region

Rabbit Polyclonal Antibody

Catalog # AI14722

Product Information

Application	WB
Primary Accession	P38159
Other Accession	NM_002139 , NP_002130
Reactivity	Human, Mouse, Rat, Rabbit, Zebrafish, Pig, Dog, Guinea Pig, Horse, Bovine
Predicted	Human, Mouse, Rat, Rabbit, Zebrafish, Pig, Dog, Guinea Pig, Horse, Bovine
Host	Rabbit
Clonality	Polyclonal
Calculated MW	42332

Additional Information

Gene ID	27316
Alias Symbol Other Names	HNRPG, RBMXP1, RBMXRT, RNMX, hnRNP-G RNA-binding motif protein, X chromosome, Glycoprotein p43, Heterogeneous nuclear ribonucleoprotein G, hnRNP G, RNA-binding motif protein, X chromosome, N-terminally processed, RBMX, HNRPG, RBMXP1
Format	Liquid. Purified antibody supplied in 1x PBS buffer with 0.09% (w/v) sodium azide and 2% sucrose.
Reconstitution & Storage	Add 50 ul of distilled water. Final anti-RBMX antibody concentration is 1 mg/ml in PBS buffer with 2% sucrose. For longer periods of storage, store at 20°C. Avoid repeat freeze-thaw cycles.
Precautions	RBMX Antibody - C-terminal region is for research use only and not for use in diagnostic or therapeutic procedures.

Protein Information

Name	RBMX
Synonyms	HNRPG, RBMXP1
Function	RNA-binding protein that plays several role in the regulation of pre- and post-transcriptional processes. Implicated in tissue- specific regulation of gene transcription and alternative splicing of several pre-mRNAs. Binds to and stimulates transcription from the tumor suppressor TXNIP gene promoter; may thus be involved in tumor suppression. When associated with SAFB, binds to and stimulates transcription from the SREBF1 promoter. Associates with nascent mRNAs transcribed by RNA polymerase II. Component of the

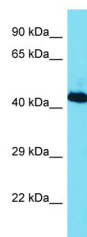
supraspliceosome complex that regulates pre-mRNA alternative splice site selection. Can either activate or suppress exon inclusion; acts additively with TRA2B to promote exon 7 inclusion of the survival motor neuron SMN2. Represses the splicing of MAPT/Tau exon 10. Binds preferentially to single-stranded 5'-CC[A/C]-rich RNA sequence motifs localized in a single-stranded conformation; probably binds RNA as a homodimer. Binds non-specifically to pre-mRNAs. Also plays a role in the cytoplasmic TNFR1 trafficking pathways; promotes both the IL-1-beta-mediated inducible proteolytic cleavage of TNFR1 ectodomains and the release of TNFR1 exosome-like vesicles to the extracellular compartment.

Cellular Location	Nucleus Note=Component of ribonucleosomes. Localizes in numerous small granules in the nucleus
Tissue Location	Expressed strongly in oral keratinocytes, but only weakly detected in oral squamous cell carcinomas (at protein level)

References

Soulard M.,et al.Nucleic Acids Res. 21:4210-4217(1993).
Venables J.P.,et al.Submitted (JUN-1998) to the EMBL/GenBank/DDBJ databases.
Lingenfelter P.A.,et al.Mamm. Genome 12:538-545(2001).
Lin T.-Y.,et al.Submitted (NOV-2003) to the EMBL/GenBank/DDBJ databases.
Ota T.,et al.Nat. Genet. 36:40-45(2004).

Images



Host: Rabbit
Target Name: RBMX
Sample Tissue: Jurkat Whole cell lysate
S
Antibody Dilution: 1.0µg/mlRBMX is supported by BioGPS gene expression data to be expressed in Jurkat

Please note: All products are 'FOR RESEARCH USE ONLY. NOT FOR USE IN DIAGNOSTIC OR THERAPEUTIC PROCEDURES'.