

SPC25 antibody - middle region

Rabbit Polyclonal Antibody

Catalog # AI14729

Product Information

Application	WB
Primary Accession	Q9HBM1
Other Accession	NM_020675 , NP_065726
Reactivity	Human, Mouse, Rat, Rabbit, Pig, Dog, Guinea Pig, Horse, Bovine
Predicted	Human, Mouse, Rat, Pig, Dog, Bovine
Host	Rabbit
Clonality	Polyclonal
Calculated MW	26153

Additional Information

Gene ID	57405
Alias Symbol	AD024, MGC22228, SPBC25, hSpc25
Other Names	Kinetochore protein Spc25, hSpc25, SPC25, SPBC25
Format	Liquid. Purified antibody supplied in 1x PBS buffer with 0.09% (w/v) sodium azide and 2% sucrose.
Reconstitution & Storage	Add 50 ul of distilled water. Final anti-SPC25 antibody concentration is 1 mg/ml in PBS buffer with 2% sucrose. For longer periods of storage, store at 20°C. Avoid repeat freeze-thaw cycles.
Precautions	SPC25 antibody - middle region is for research use only and not for use in diagnostic or therapeutic procedures.

Protein Information

Name	SPC25
Synonyms	SPBC25
Function	Acts as a component of the essential kinetochore-associated NDC80 complex, which is required for chromosome segregation and spindle checkpoint activity (PubMed: 14699129 , PubMed: 14738735). Required for kinetochore integrity and the organization of stable microtubule binding sites in the outer plate of the kinetochore (PubMed: 14699129 , PubMed: 14738735). The NDC80 complex synergistically enhances the affinity of the SKA1 complex for microtubules and may allow the NDC80 complex to track depolymerizing microtubules (PubMed: 23085020).

Cellular Location

Nucleus. Chromosome, centromere, kinetochore. Note=Localizes to kinetochores from late prophase to anaphase (PubMed:14738735). Localizes specifically to the outer plate of the kinetochore (PubMed:14699129, PubMed:14738735)

References

McClelland M.L.,et al.Curr. Biol. 14:131-137(2004).

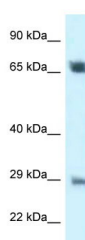
Xiao H.,et al.Submitted (JAN-2000) to the EMBL/GenBank/DDBJ databases.

Ebert L.,et al.Submitted (JUN-2004) to the EMBL/GenBank/DDBJ databases.

Ota T.,et al.Nat. Genet. 36:40-45(2004).

Hillier L.W.,et al.Nature 434:724-731(2005).

Images



WB Suggested Anti-SPC25 Antibody Titration: 1.0 µg/ml
Positive Control: 721_B Whole CellSPC25 is supported by
BioGPS gene expression data to be expressed in 721_B

Please note: All products are 'FOR RESEARCH USE ONLY. NOT FOR USE IN DIAGNOSTIC OR THERAPEUTIC PROCEDURES'.